

STR800 Series 4G Router Datasheet

STR800-4S & STR800-4D

Overview

STR800-4S and STR800-4D is Maipu's brand industrial design 4G router, applicable to the data transmission service under an environment that goes against the wired network. Adopt the 4G high-speed wireless network as the data-bearing network to provide a safe and flexible wireless connection. No matter where are you, your device can make use of a 4G network for internet connection. STR800 series wireless routers meet the requirements of the industry scenario. It has the features of low power consumption, small dimension, and lightweight. The operational temperature of the device can reach up to $-25^{\circ}\text{C}\sim+60^{\circ}\text{C}$. EMC is strict, so it is applicable to the strict and small industry environments such as energy, transportation, financial, and retail customers.

STR800-4S supports one 4G modems and dual SIM slots, which can realize active-backup failover working mode, if one SIM card occurs network issue, the router will switch to another SIM card for dialing.

STR800-4D supports dual 4G modems and dual SIM slots, which can realize active-active failover working mode, both 4G links can be working at the same time.



STR800-4S



STR800-4D

STR800 series router provides an upgradeable wireless network platform. You can adopt the in-built 4G module to share the 4G network provided by the local mobile carriers, making your device to connect the high-speed Internet or enterprise private network.

STR800 series router has rich VPN functions and can be connected to a secure private channel of the enterprise based on the 4G network. Meanwhile, the device data can be transmitted in the secure IPsec / GRE / L2TP / OpenVPN / DMVPN tunnels, preventing the data from being accessed and tampered, with and providing higher security for the application over the Internet.

STR800-4S supports one 4G modem but two SIM cards from different mobile operators. Two SIM cards can work at active-backup mode. If one of the 4G links is working unstable, STR800-4S will try to dial through another SIM card.

STR800-4D supports dual 4G modems and two SIM cards from different mobile operators. Two SIM cards can work at active-active mode, both of the 4G modems can work at the same time, and the two 4G links auto-failover can be based on the signal strength and latency.

STR800 series 4G routers offer a comprehensive LTE solution for the industrial application over 4G mobile network, it can be managed by Maipu M2M cloud management platform, customers can remotely configure and

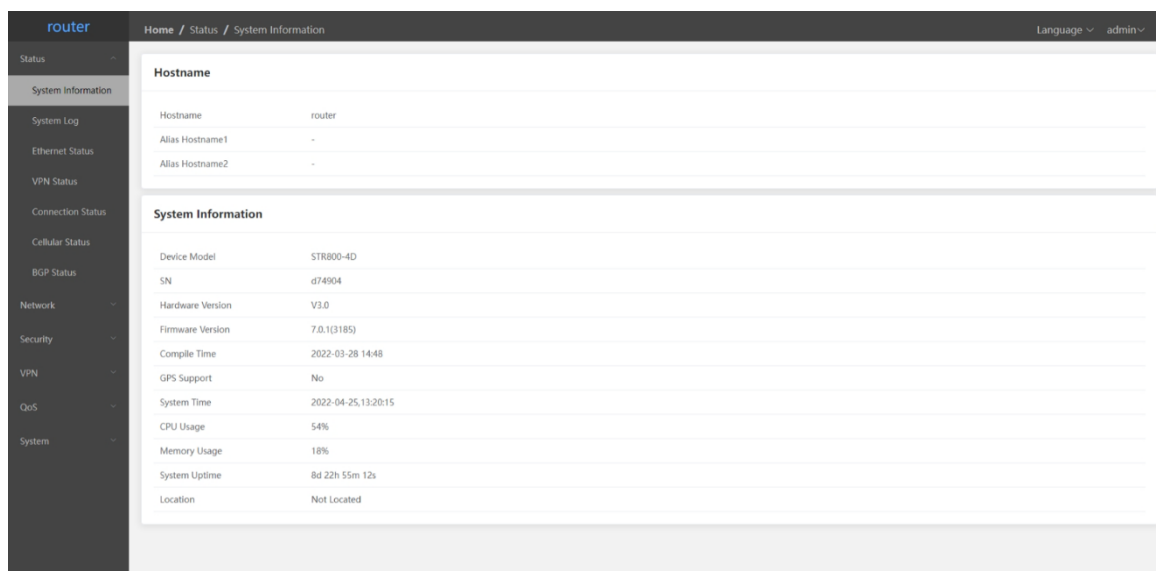
monitor the router through this platform. This will greatly decrease the OPEX and increase the working efficiency.

Technical Specifications

Product Series	STR800 4G Router Series	
Models	STR800-4S(V3)	STR800-4D(V3)
Memory	128MB	128MB
Flash	16MB	16MB
SIM Slots	2	2
4G LTE Modem	1	2
LTE Band	Asia: 1/3/5/8/34/38/39/40/41 Europe: 1/3/7/8/20/28/38/40/41	
LTE Datarate	150Mbps (Downlink)/50Mbps (Uplink)	
LTE Standard	CAT-4	
WAN&LAN Interface	5*10/100Mbps Ethernet, one or two WAN ports.	
Wi-Fi (2.4Ghz)	Optional, 802.11 b/g/n Wi-Fi WAN mode or AP mode	
USB Console	One Mini USB Console.	
LED indicator	POWER, SYSTEM, WAN, LAN, 4G	
Chassis material	Metal Shell	
Fan design	Fanless	
External Antenna	≥7dbi	
Dimension(W×D×H)	144*86*31mm	
Input voltage (DC)	12V DC Jack, external adaptor	
Max. power	≤10W	
Temperature	Long-term work temperature: -20℃-65℃	
	Storage temperature: -40℃-70℃	
Humidity	Work humidity: 10%-95% non-condensing	
	Storage humidity: 0%-95% non-condensing	
Software features		
Network Protocol	PPP, PPPoE,	
3G/4G function	3G/4G Band Selection, PIN code	
Routing Protocol	Static Routing, RIP, OSPF, BGP	
Link Failover	Based on IP reachability, Delay, 4G Signal Strength	
Security Functions	NAT, PAT, ACL, Basic Firewall	
VPN Function	IPSec VPN, GRE VPN, L2TP VPN, PPTP VPN, Open VPN, DMVPN, PKI, IKEv1, IKEv2	
Encryption	DES, 3DES, AES128, AES192, AES256	
Diagnosis Tool	Ping, Traceroute, Network Detection, Packet Capture	
QoS Functions	Rate Limitation	
System Status Log	3G/4G Log, DHCP/DNS Log, IPSec Log, Boot Log, etc.	
Management	NTP Client, Console Management, Web Management, Cloud Management	

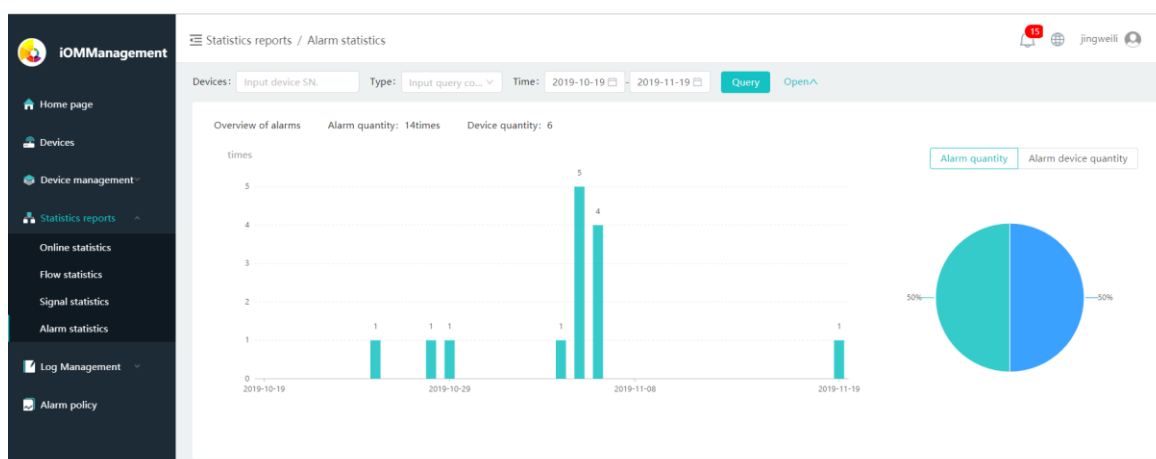
Visible Management

The STR800-4S provides a graphical user interface designed for convenient setup and control. Accessed via web browser, the user-friendly interface provides intuitive management with a virtual view of the ports, displaying physical connectivity, speed, and 4G/WAN/LAN status. The Dashboard displays detailed statistics: IP information, MTU, transmit and receive speeds, and status for each physical and virtual interface.



The GUI Interface Management

The STR800-4S can be managed by Maipu IOM cloud platform, the platform can realized mass management. Customers can remote management ten thousands of industrial routers through internet. The IOM platform support user management, device management, configuration management, alarm management, report management, etc.



IOM Cloud Management Platform

Order Information

Host model	Description
Models	
STR800-4S	V3 Version: 1-Port 100M WAN, 4-Port 100M LAN, One LTE 4G Modem, Dual SIM Slots, External antenna design, 12V DC power adaptor
STR800-4D	V3 Version: 1-Port 100M WAN, 4-Port 100M LAN, Two LTE 4G Modem, Dual SIM Slots, External antenna design, 12V DC power adaptor
Power Supply	
PS-India	India standard power supply adaptor
PS-America	America standard power supply adaptor
PS-UK	UK standard power supply adaptor
PS-Europe	Europe standard power supply adaptor

All rights reserved. Printed in the People's Republic of China.

No part of this document may be reproduced, transmitted, transcribed, stored in a retrieval system, or translated into any language or computer language, in any form or by any means, electronic, mechanical, magnetic, optical, chemical, manual or otherwise without the prior written consent of Maipu Communication Technology Co., Ltd.

Maipu makes no representations or warranties with respect to this document contents and specifically disclaims any implied warranties of merchantability or fitness for any specific purpose. Further, Maipu reserves the right to revise this document and to make changes from time to time in its content without being obligated to notify any person of such revisions or changes.

Maipu values and appreciates comments you may have concerning our products or this document. Please address comments to:

Maipu Communication Technology Co., Ltd
Maipu Mansion, No. 16 Jiuxing Avenue
Hi-Tech Zone
Chengdu, Sichuan Province
P. R. China
610041
Tel: (86) 28-65544850,
Fax: (86) 28-65544948,
URL: [http:// www.maipu.com](http://www.maipu.com)
Email: overseas@maipu.com

All other products or services mentioned herein may be registered trademarks, trademarks, or service marks of their respective manufacturers, companies, or organizations.