

**Ruijie**



# Product Catalogue

## January 2018

[www.ruijienetworks.com](http://www.ruijienetworks.com)



# Index

About Ruijie .....	01
Industry-tailored Solutions .....	03

## Data Center Switch

RG-N18000-X Switch Series .....	08
RG-S6220-H Switch Series .....	08

## Core Switch

RG-N18000 Switch Series .....	09
RG-S8600E Switch Series .....	09
RG-S7800C Switch Series .....	09

## Distribution Switch

RG-S5750-H Switch Series .....	10
RG-S5750-E Switch Series .....	10

## Access Switch

RG-S2910 Switch Series .....	11
RG-S2900G-E Switch Series .....	11

## Industrial Switch

RG-IS2700G Switch Series .....	11
--------------------------------	----

## Wireless

Indoor AP Series .....	14
Wall AP Series .....	14
Outdoor AP Series .....	14
Mobile LTE WiFi Router Series .....	15
Wireless Controller Series .....	15

## Routers

RG-RSR30-X Router Series .....	17
RG-RSR20-X Router Series .....	17
RG-RSR10-02E Router Series .....	17
RG-RSR10-01G-T(W) Router Series .....	17

## Software

RG-MACC-BASE .....	18
RG-MACC-SAM .....	19
RG-SNC .....	20
RG-SMP .....	20

## Firewall

RG-WALL 1600-X9300 Series .....	21
RG-WALL 1600-M6600 Series .....	21
RG-WALL 1600-M5100 Series .....	21

## Gateway

RG-EG3000XE-I Gateway Series .....	22
RG-EG3000UE-I Gateway Series .....	22

## Cloud Service

Wireless Intelligent Service (WIS) .....	23
Ruijie Cloud Service .....	24

## Small Business

XS-S1960 Switch Series .....	26
RG-S1800 Switch Series .....	26
RG-AP720(L) and AP710 AP Series .....	27
RG-AP130(L) AP Series .....	27
RG-WS6008 Wireless Controller Series .....	27
RG-WALL 1600-S3600 Firewall Series .....	28
RG-WALL 1600-S3200 Firewall Series .....	28
RG-WALL 1600-S3100 Firewall Series .....	28
RG-EG2000CE-I Gateway Series .....	28

## Cloud Class

Server: RG-RCD6000 V3 .....	30
Server: RG-RCD4500 V3 .....	30
Terminal: RG-Rain100 V2 .....	30
Software: Class Manager Rainbow .....	30

Training & Services .....	31
---------------------------	----

## About Ruijie

Top 3 China  
enterprise-class  
networking vendors

Over 35%  
compound growth  
for 15 continuous  
years



Founded in 2000  
40+ branches  
5 R&D centers



4000+ employees  
4000+ channel  
partners

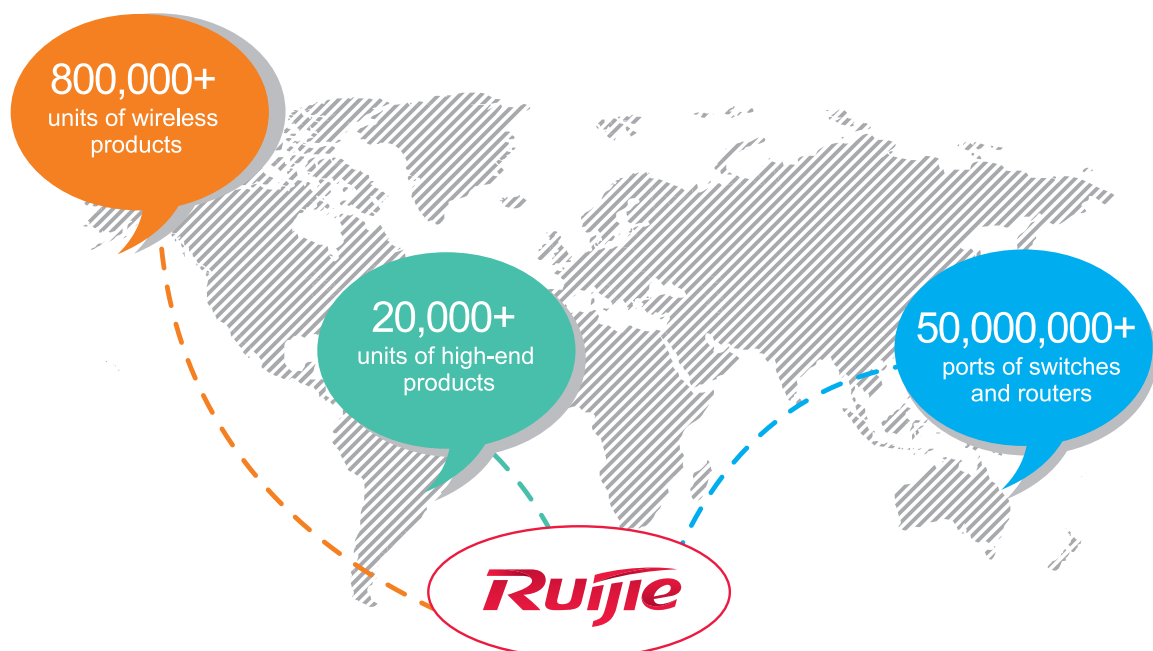
Top 2 market share in China  
Enterprise WLAN market for 3  
consecutive years

Source: IDC, March 2017



9 product lines  
300+ products

## Worldwide Deployment





# Market Share in China

Ruijie is focusing on industries, forming more than **40 teams** for the development of the various solutions, in order to provide advanced and **fit-to-scenarios solutions** to our clients.



## Government

**Top 3** vendors  
**80+** ministries users  
**5,000+** local government users



## Telecom

**NO.1** access & aggregation switch and sales volume of WLAN products is **300,000+** in China Mobile  
**Leading supplier** for access & aggregation switch in China Telecom  
**1<sup>st</sup>** large-scale deployment of 4G routers and LTE-FI solution in China



## Health Care

**Mainstream** vendors  
**2,300+** large & medium hospitals



## Education

**No.1** market share in China Education Market for 11 consecutive years  
(Source: CCW Research, CCID Consulting)  
**2,900+** Higher Education Institutions  
**50,000+** Primary and Secondary schools  
(Covering all provinces in China)  
**112** National "211" Project Key Universities



## Finance

**Top 3** vendors  
Products & solutions are adopted by  
**1,000+** finance users  
**Mainstream vendors** for ICBC  
--largest bank worldwide  
**No.1** market share in China Life



## Internet

Well recognized by users such as:  
Alibaba, Baidu, Sohu, LeTV, etc.



## Hospitality

Adopted by **5,000+** large & medium sized hotels



## Enterprise

**10,000 +** Users  
Valued customers include:  
State Grid Corporation of China, China National Petroleum Corporation, Sinopec Group, China State Construction Engineering Corporation, etc.



## Sports and Games

Participation in international sports events such as: Beijing Olympics, Universiade, Asian Games, London Olympics, Sochi Olympics, etc.

# Industry-tailored Solutions

Ruijie is focusing on industries, forming more than 40 teams for the development of the various solutions, in order to provide advanced and fit-to-scenarios solutions to our clients. Our highly customizable solutions cater for the needs of the following industries and beyond.



## Cloud Management Solution



Applying Cloud Management Solution to Different Industries

The Ruijie RG-MACC (Managed @ Cloud Center) is a revolutionary cloud management platform which supports unified management and configuration of APs, switches and gateway devices, as well as value-added marketing features, site survey, etc. The RG-MACC consists of various feature modules, such as management, marketing and AAA (authentication, authorization and accounting), site survey planner, diagnostic tools, etc. The platform significantly reduces the total cost of investment while ensuring high usability of the RG-MACC.

## Marketing Wi-Fi Solution

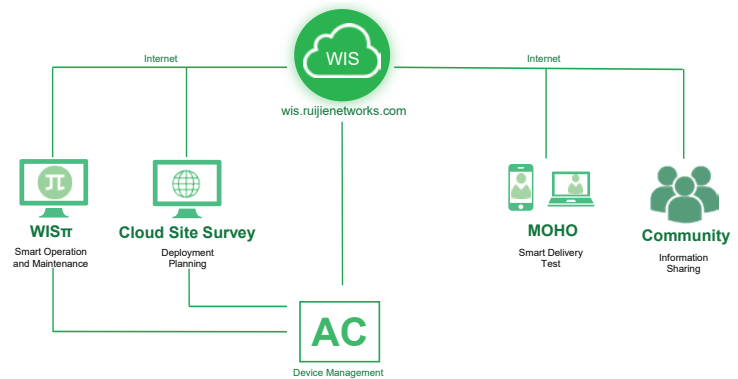
Ruijie Cloud Marketing Wi-Fi Solution supports the RG-MACC-SAM (Security x Accounting x Marketing) which is a single platform that provides AAA and captive portal service. It enables the clients to offer their guests public Wi-Fi and network access. Using a customizable splash portal, powerful proximity marketing, advertising, and analytic applications, they can provide an engaging Wi-Fi and network experience. RG-MACC-SAM is the next-generation AAA system with billing and identity management in mind.



Key Features of the Marketing Wi-Fi Solution

# Wireless Intelligent Solution (WIS)

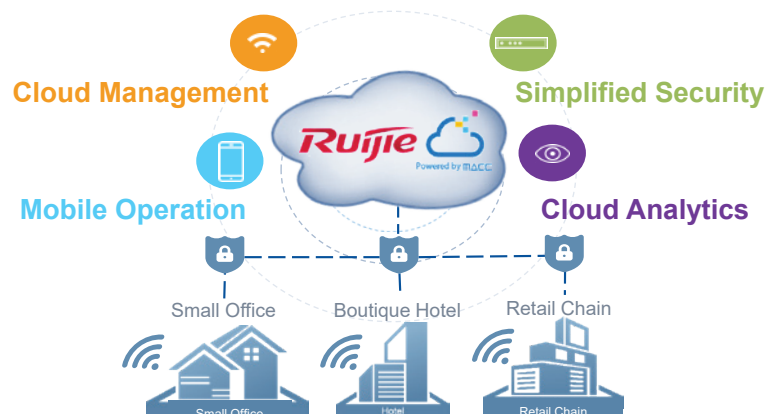
The Ruijie Wireless Intelligent Service (WIS) is a revolutionary smart cloud service platform which supports smart operation and maintenance of devices, cloud site survey, Wi-Fi testing, operation diagnosis, smart network optimization, etc.



WIS Cloud Smart Services Platform

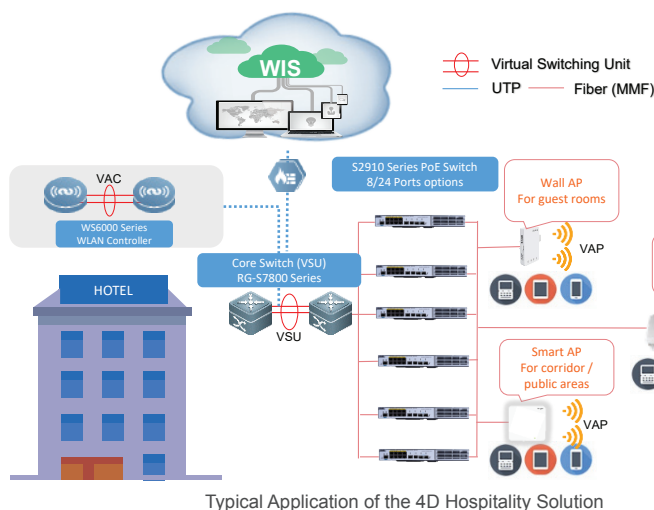
## Ruijie Cloud Solution for SMB

Ruijie Cloud Solution is Ruijie's easy and efficient public cloud service for chain stores, small and medium-sized businesses and boutique hotels. The solutions include equipment deployment, monitoring, network optimization and operational lifecycle management; enabling customers with simple plug and play deployment and operation and maintenance. Meeting the needs for automatic cloud RF planning and user experience monitoring, it also support mobile monitoring (add equipment using QR code scanning, network status monitoring and alarm).



Ruijie Cloud Solution Highlights

## 4D Hospitality Solution



Typical Application of the 4D Hospitality Solution

Ruijie helps you innovate your hotel with a smart network. Our 4D Hospitality Solution features ubiquitous Wi-Fi, robust backbone, smart security, social marketing and unified management to transform your hotel network into a competitive as well as revenue-generating asset.



# Digital Campus 21 Education Solution

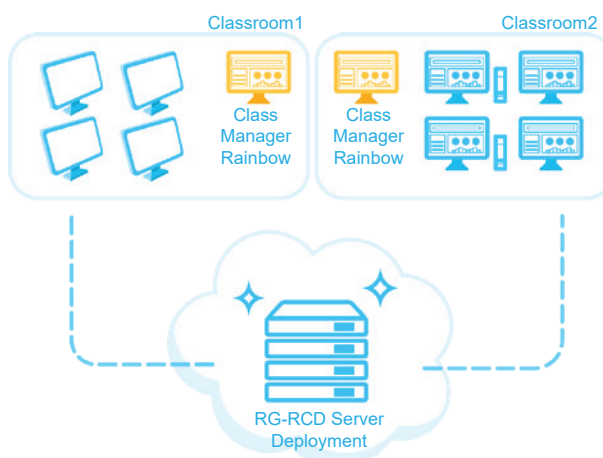
Ruijie Digital Campus 21 Education Solution is a comprehensive end-to-end ICT solution consisting of Ruijie switches, wireless APs, security, cloud class devices and network management software to optimize the performance of campus networks. The 2+1 strategy adopts 21st century state-of-the-art technology, incorporating two infrastructures, namely scalable wired network and self-healing wireless network with new definition classroom learning to provide ultra-fast experience and simplified operation.



Overview of Ruijie Products for Digital Campus 21 Education Solution

## Cloud Class Solution

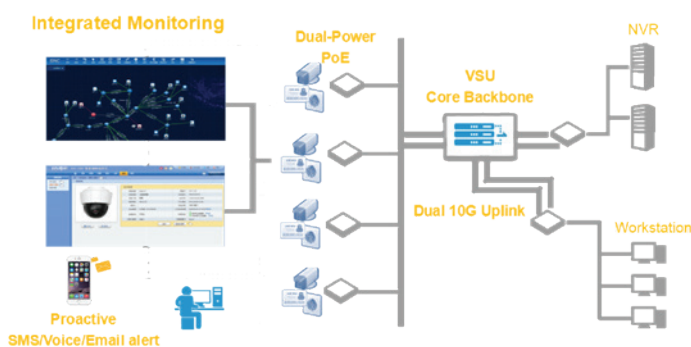
Ruijie Cloud Class, which is invented based on desktop virtualization technology, can be widely applied in the general education industry. This solution will resolve common issues of traditional PC room such as “low efficiency, high cost, complex operational management & maintenance and bad user experience”. Cloud Class will be replacing traditional PC room in coming years providing the best education solution.



Multiple Classrooms Deployment Using Cloud Class

## IP Surveillance Solution

Ruijie, in collaboration with third-party surveillance and storage vendors, is proud to present a comprehensive City-wide IP Surveillance Solution to meet your specific needs. The backend platform supports unified management of all the surveillance devices like IP cameras, servers, storage devices, etc. Ruijie City-wide IP Surveillance Integrated Network and Monitoring Solution delivers outstanding performance, ease of management and maximum cost savings to protect your city.



Typical Application Solution Diagram



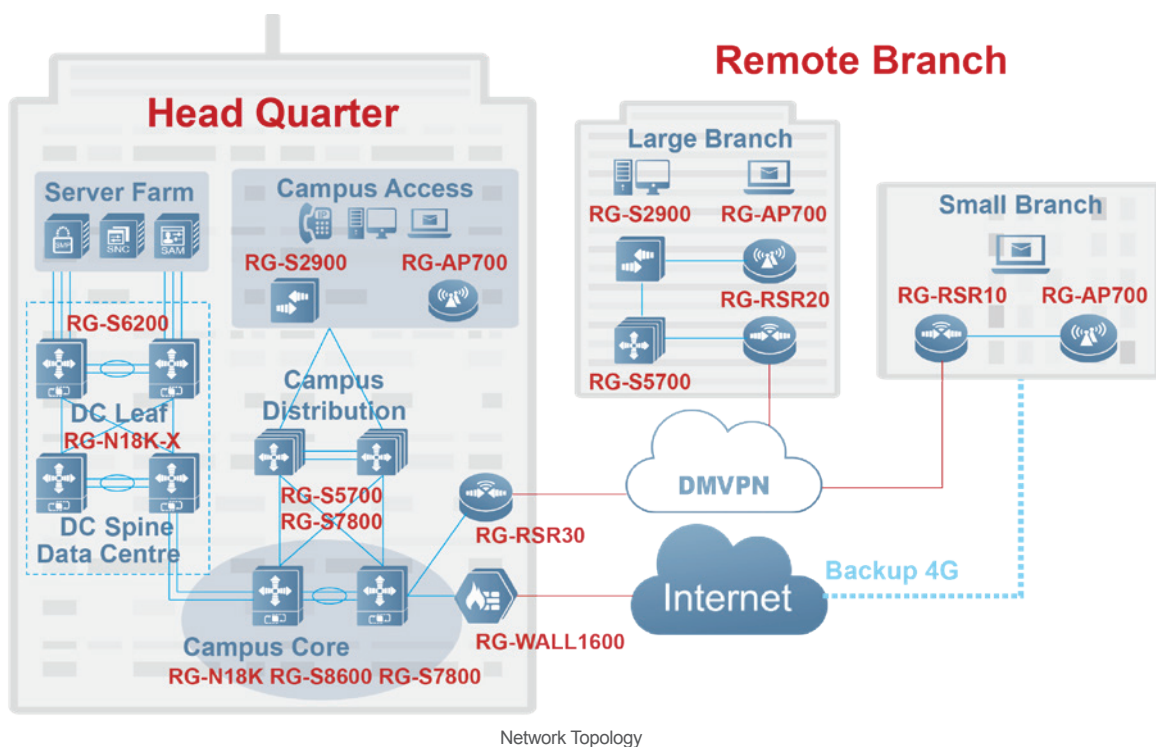
# Switches

## Data Center, Core, Distribution, Access and Industrial Switches

### PRODUCT FAMILY OF RUIJIE SWITCHES

Data Center Switch	 RG-N18000-X Series	 RG-S6220-H Series	
Core Switch	 RG-N18000 Series	 RG-S8600E Series	 RG-S7800C Series
Distribution Switch	 RG-S5750-E Series	 RG-S5750-H Series	
Access Switch	 RG-S2910-H Series	 RG-S2910XS-E Series	 RG-S2900G-E Series
Industrial Switch	 RG-IS2700G Series		

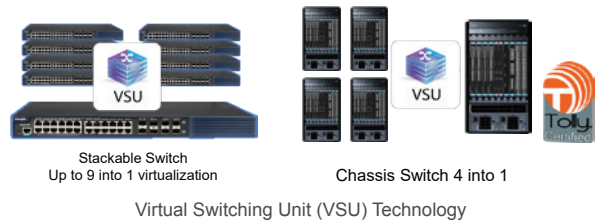
### APPLICATION SCENARIO



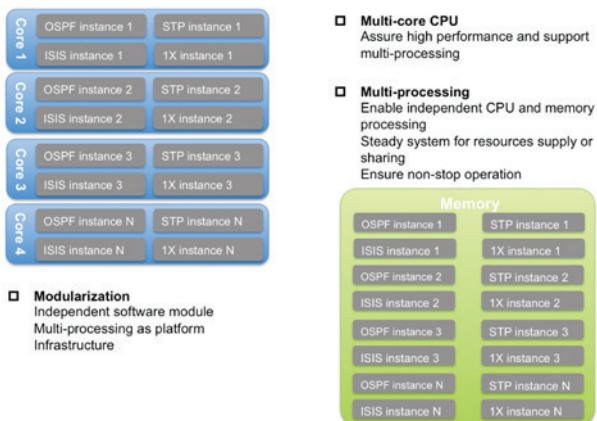
## KEY TECHNOLOGIES

### VIRTUAL SWITCHING UNIT (VSU) TECHNOLOGY

The Virtual Switching Unit (VSU) technology is an out of the box feature which requires no additional license. The switches are managed as 1 entity (Single IP) in VSU which simplifies management. This technology is also flexible, bandwidth of the VSU link can vary (1G/10G/40G/100G) and support distance stacking via fiber cables. Carries class <50ms failover time ensures smooth and uninterrupted transmission of key services. The Ruijie switch supports cross-device link aggregation for easy double uplink to server/switch, effectively maximizing bandwidth investment return.



### MULTI-PROCESSING MODULAR OPERATING SYSTEM

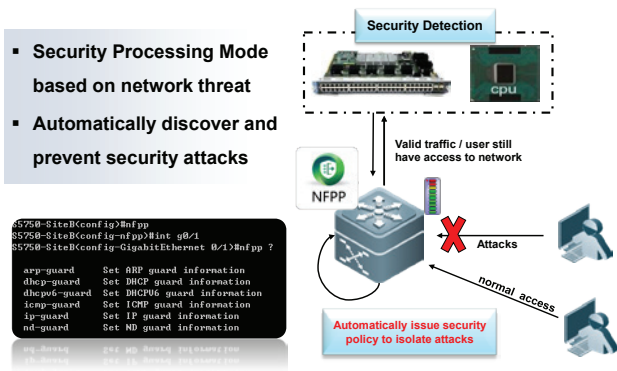


Modular Operating System

Since 1998, Ruijie has been investing on the R&D of modular operating system. The software platform is designed based on the next-generation RGOS 11.X multi-processing modular operating system to integrate the service features such as loosely coupled firewall, wireless and authentication into a unified cloud network operating system. The software platform also supports full virtualization and offers rich data center and campus network features. The key availability indicators such as multi-processing modules, process backup and hot patch have reached the industry-leading level.

### NFPP: NETWORK FOUNDATION PROTECTION POLICY

The Ruijie NFPP (Network Foundation Protection Policy) is a protection system to enhance the inherent security performance of the switch by detecting attack sources and taking actions such as rate limiting and isolation, so that the switch processor and channel bandwidth resources can be protected and normal packet forwarding and protocol state can be guaranteed. NFPP protects the switch at data plane, management plane and control plane. The hardware-based protection allows the software-based protection mechanism to operate more efficiently without consuming too many resources, while software-based protection can cover the shortage of hardware-based protection, making protection policy more specific and flexible.



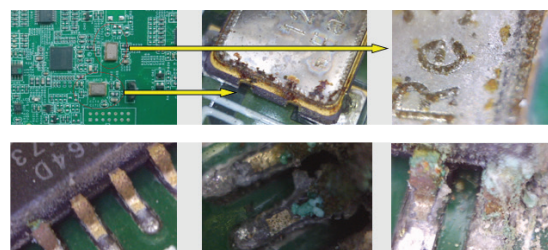
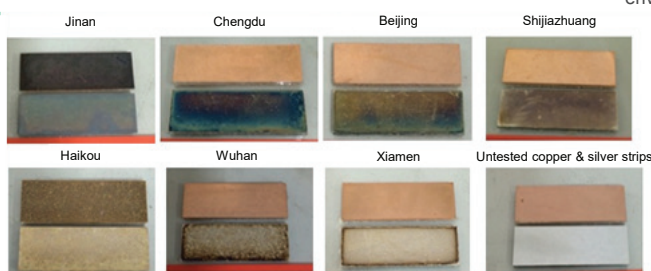
Security Detection Enabled by NFPP

## RUIJIE FAQ

### HOW DO WE REDUCE COMPONENT WEAR AND TEAR UNDER HARSH ENVIRONMENTS?

The fanless design of RG-S2928G-E V3 and RG-S2910-10GT2SFP-P-E can reduce the ingress of corrosive gases and dust, thereby effectively lowering the risk of corrosion.

The PCBA of all the access switches except the two models has conformal coating with excellent insulation and protection against moisture, dust, corrosion, mildew and salt spray to enhance environmental adaptability.



Anti-corrosion Design of the PCBA

# Data Center Switch

## RG-N18000-X SERIES

### OVERVIEW

Ruijie Newton 18000-X Switch Series (RG-N18000-X) is the next-generation high-performance core switches designed for cloud network, which tops the class with its zero-backplane design on the 100T switching platform. The RG-N18000-X Switch Series offers high-efficiency and high-stability switching services, and guarantees ten-year smooth network upgrades.

### KEY FEATURES

- Ideal for ultra-large campus and data center networks
- Ideal for high-performance computing with ultra-low latency
- CLOS non-blocking architecture with up to 11.1T bandwidth per slot
- Scalable capacity for future expansion: up to 576 100GE, 576 40GE, 2304 10GE ports
- Ready for future: support 100G Ethernet and SDN/ OpenFlow



Model	Switching Capacity (Tbps)	ARP Table Size	MAC Table Size	Slot				Maximum Port				VSU	Rack Height
				Chassis	Control Engine	Line Card	Fabric Engine	GE	10G	40G	100G		
RG-N18018-X	178/1032	Up to 125K	Up to 750K	18	2	16	6	2304	2304	576	576	✓	21RU
RG-N18010-X	89/516	Up to 125K	Up to 750K	10	2	8	6	1152	1152	288	288	✓	12RU

## RG-S6220-H SERIES

### OVERVIEW

Ruijie's industry-leading RG-S6220H Switch Series, designed to power next-generation data centers and cloud computing services, delivers non-blocking, unified and virtualized switching performance with high transparency and sustainability. The high-performance and cost-efficient RG-S6220H Switch Series solves the problems such as traffic surge and high deployment cost, serving as the solid foundation for cloud computing network solutions.

### KEY FEATURES

- Data Centre Virtualization (EVPN VXLAN, VSU 2.0, OpenFlow) Support
- Non-Blocking Performance with Powerful Caching Capacity
- Up to 48 x 10G BASE-X/BASE-T Ports and 32 x 40G BASE-X Ports
- Advanced Layer 3 Routing Support
- Power and Fan Redundancy Support



Model	Switching Capacity (Tbps)	ARP Table Size	MAC Table Size	Maximum Port			VSU	L3 Routing	Power Supply	Rack Height
				GE	10G	40G				
RG-S6220-32QXS-H	2.56	Up to 40K	Up to 96K	128	128	32	✓	Static routing, RIP, OSPF, IS-IS, BGP	AC/DC	1 RU
RG-S6220-48XS6QXS-H	2.56	Up to 40K	Up to 96K	48	48	6	✓	Static routing, RIP, OSPF, IS-IS, BGP	AC/DC	1 RU
RRG-S6220-48XT6QXS-H	2.56	Up to 40K	Up to 96K	48	48	6	✓	Static routing, RIP, OSPF, IS-IS, BGP	AC/DC	1 RU

## FEATURE HIGHLIGHT

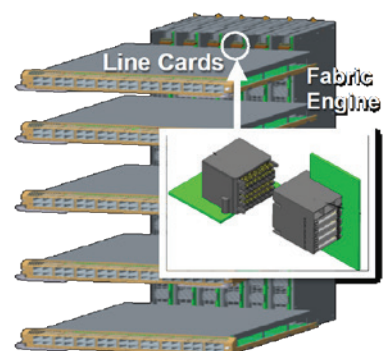
### ADVANCED ZERO-BACKPLANE DESIGN

The RG-N18000-X Series firstly adopts the zero-backplane design for switches with 100T switching capacity, which supports a direct connection between line cards and fabric engines without any backplane connections. The cross-module data traffic is transmitted to the fabric engines directly with minimized transmission loss. It can also improve internal transmission efficiency of service data traffic, maximizing the performance and switching capacity of the switches. Therefore, users are not required to replace the chassis for future upgrades, bringing a utilization lifespan of more than 10 years to the data center users.



Multilevel CLOS Architecture

### Zero-backplane



Advanced Zero-cabling Backplane Design

# Core Switch

## RG-N18000 SERIES

### OVERVIEW

Ruijie Newton 18000 Switch Series (RG-N18000) is industry leading in supporting cloud data center with a broad spectrum of specialized campus network features. The RG-N18000 core switches achieve cloud network integration, virtualization, and flexible deployment to fulfill the evolving next-gen cloud architecture requirements.

### KEY FEATURES

- Highest board performance and lowest latency in the world
- World-leading virtualization technologies
- World's first to support both cloud data center and cloud campus network
- One of the first vendors in China to use the multi-process modular OS



Model	Switching Capacity (Tbps)	ARP Table Size	MAC Table Size	Slot				Maximum Port			VSU	Rack Height
				Chassis	Control Engine	Line Card	Fabric Engine	GE	10G	40G		
RG-N18014	120/500.4	Up to 170K	Up to 512K	18	2	12	4	576	576	288	✓	20 RU
RG-N18012	100/417	Up to 170K	Up to 225K	16	2	10	4	480	480	129	✓	14RU
RG-N18010	80/333.6	Up to 170K	Up to 512K	14	2	8	4	384	384	192	✓	18 RU
RG-N18007	50/208.5	Up to 170K	Up to 512K	7	2	5	N/A	240	240	120	✓	8 RU

## RG-S8600E SERIES

### OVERVIEW

Ruijie RG-S8600E Switch Series is industry-leading in supporting cloud data center with a broad spectrum of specialized campus network features. The RG-S8600E series achieves cloud network integration, virtualization, and flexible deployment to fulfill the ever-evolving next-gen cloud architecture. With various port densities support up to 96 full line-rate interfaces at 40GE or 384 at 10GE, the series is an ideal match for a wide range of deployment scenarios such as data center, MAN, campus network and integrated network of data center and campus network.

### KEY FEATURES

- Unified OS for Both Campus and Data Center Networks
- Superior Performance with up to 90.66Tbps Switching Capacity
- Support Large-Scale MAC (up to 512K) and ARP Table (up to 170K)
- Support up to 384 x 10GE Ports and 96 x 40GE Ports
- Ultra-Low Latency of Less Than 1μs



Model	Switching Capacity (Tbps)	ARP Table Size	MAC Table Size	Slot				Maximum Port			VSU	Rack Height
				Chassis	Control Engine	Line Card	Fabric Engine	GE	10G	40G		
RG-S8610E	43.44/222.4	Up to 170K	Up to 512K	10	2	8	4	384	384	96	✓	18 RU
RG-S8607E	27.15/139	Up to 170K	Up to 512K	7	2	5	N/A	240	240	60	✓	8 RU
RG-S8605E	16.29/83.4	Up to 170K	Up to 512K	5	2	3	N/A	144	144	36	✓	5 RU

## RG-S7800C SERIES

### OVERVIEW

Ruijie RG-S7800C Core Switch is specially designed for next-gen integrated network. Implementing advanced RGOS11. X operating system and VSU/VSD virtualization technologies, the switch future supports future Ethernet requirements. The leading technologies break customer physical network barriers to form an integrated network. The VSU (Virtual Switch Unit) feature greatly simplifies customer network architecture to enhance the operational efficiency. The VSD (Virtual Switch Device), another virtualization technology, significantly lowers the total cost of investment by improving device utilization. The RG-S7800C switch is ideal for MAN, campus network and settings alike.

### KEY FEATURES

- Cost-effective Entry-level Chassis Switch
- Superior Performance with up to 40.72Tbps Switching Capacity
- Support Network Virtualization (VSU & VSD) and Advanced Layer 3 Routing (OSPF, BGP)
- Carrier-class Reliability: Control Engine/ Power/ Fan Redundancy, Hot-swappable Components
- Support Large-scale MAC (up to 64K) and ARP Table (up to 20K)



Model	Switching Capacity (Tbps)	ARP Table Size	MAC Table Size	Slot			Maximum Port		VSU	Rack Height
				Chassis	Control Engine	Line Card	GE	10G		
RG-S7808C	15.36/81.48	Up to 20K	Up to 64K	8	2	6	288	48	✓	10RU
RG-S7805C	15.36/40.74	Up to 20K	Up to 64K	5	2	3	144	24	✓	4RU



# Distribution Switch

## RG-S5750-H SERIES

### OVERVIEW

Ruijie RG-S5750-H Switch Series is a collection of next-gen multiservice switches, offering remarkable performance and enhanced security. Implementing an industry-leading hardware design and Ruijie's latest RGOS11.X modular operating system, the switches offer better table capacity, improved hardware processing performance, and easier user operation. The RG-S5750-H series supports flexible Gigabit access and high-density 10G port scalability. All models offer fixed 4 x 10G fiber ports and dual expansion slots, supporting high-density, high-performance port uplink performance. These leading features fully meet requirements of high-density access and demanding aggregation.



### KEY FEATURES

- Customized for Large Campus Network: Up to 64K MAC Address
- Exceptional Performance & Scalability
- Network Virtualization (VSU) Support (up to 9 Stack Members)
- Out-of-box with advanced Layer 3 Routing and MPLS features
- High Reliability: Hot Patches, 1+1 Power Module Redundancy, Hot Swappable Components

Model	Switching Capacity (Gbps)	ARP Table Size	MAC Table Size	Downlink	Uplink		VSU	Power Supply	Rack Height
				GE	SFP	SFP/SFP+			
RG-S5750C-48GT4XS-H	598	10K	64K	48	4x1G/10G	SFP+	✓	AC/DC	1 RU
RG-S5750C-28SFP4XS-H	598	10K	64K	28	Up to 8x1G/10G	SFP+	✓	AC/DC	1 RU
RG-S5750C-28GT4XS-H	598	10K	64K	28	4x1G/10G	SFP+	✓	AC/DC	1 RU

## RG-S5750-E SERIES

### OVERVIEW

Ruijie RG-S5750E Series is a collection of new-generation Layer 3 switches offering high performance, advanced security, and multiservices. The Ruijie RG-S5750E Series provides flexible media interfaces to meet the connection needs of different media in network construction. With full Gigabit interface form, scalable high-density 10 Gigabit Ethernet ports, and 1:1 multilayer switching at full line rates, this series is ideal acting as the aggregation layer of a large network, fulfilling the demanding requirements of high bandwidth, performance and scalability, and also acting as the core layer of a medium-sized network, and access of the server cluster of a data center.



### KEY FEATURES

- Network Virtualization (VSU) Support
- Up to 4 x 10GE Ports
- Flexible Choice of Copper or Fiber Ports
- Advanced Layer 3 Routing Support
- Power Redundancy Support

Model	Switching Capacity (Gbps)	ARP Table Size	MAC Table Size	Downlink	Uplink		VSU	Max VLANs	Power Supply	Rack Height
				GE	SFP	SFP/SFP+				
RG-S5750-48GT/4SFP-P	256	4K	16K	48	4x 1G	SFP	✓	4K	AC/DC	1 RU
RG-S5750-48GT/4SFP-E	256	4K	16K	48	4x 1G	SFP	✓	4K	AC	1 RU
RG-S5750-24GT/8SFP-P	256	4K	16K	24	8x 1G	SFP	✓	4K	AC/DC	1 RU
RG-S5750-24SFP/8GT-E	256	4K	16K	24	8x 1G	SFP	✓	4K	AC	1 RU
RG-S5750-24GT/8SFP-E	256	4K	16K	24	8x 1G	SFP	✓	4K	AC	1 RU

## FEATURE HIGHLIGHT

### OUT-OF-THE-BOX & ADVANCED LAYER 3 ROUTING FEATURE

Provides hardware support for IPv4/IPv6 multilayer switching at line rates, supports distinction and processing of IPv4 and IPv6 packets by hardware, and provides flexible IPv6 network communication schemes according to requirement planning and network status of the IPv6 network.

Supports rich IPv4 routing protocols, including static routing protocols, RIP, OSPF, and BGP4, which enable users to select appropriate protocols for network building in different environments.



Provides Hardware Support for IPv6 Multilayer Switching

# Access Switch

## RG-S2910 SERIES

### OVERVIEW

Ruijie RG-S2910-H High Power over Ethernet (HPoE) Switch Series pushes the frontier with leading IEEE802.3bt standard, delivering 90W power output per port. The HPoE switch guarantees the best security, efficiency, stability and energy-saving experiences. Ruijie RG-S2910XS-E/P is a collection of next-gen Gigabit switches architected for superior security, high performance and outstanding energy efficiency. The series delivers full Gigabit access and unparalleled scalability to 10G performance.

### KEY FEATURES

- Up to 60 Watts per Port by High-power PoE Technology (IEEE 802.3bt)
- Industrial-grade PBOX for Flexible Remote Deployment (12VDC/ 24VAC Options)
- Outstanding Power Supply Stability (Average Error Rate <5%)
- Time & Cost Saving on Construction Works



Model	Switching Capacity (Gbps)	Downlink	Uplink		PoE Output ports			VSU	Rack Height
		GE (Base-T)	SFP	SFP/SFP+	PoE	PoE+	HPoE		
RG-S2910-48GT4XS-E	264	48	4x 1G/10G	SFP+	N/A	N/A	N/A	✓	1 RU
RG-S2910C-48GT2XS-HP-E	264	48	2x 1G/10G	SFP+	Port 1-48	Port 1-48	N/A	✓	1 RU
RG-S2910-24GT4XS-UP-H	256	24	4x 1G/10G	SFP+	Port 1-24	Port 1-24	Port 1-4	✓	1 RU
RG-S2910-24GT4XS-E	264	24	4x 1G/10G	SFP+	N/A	N/A	N/A	✓	1 RU
RG-S2910C-24GT2XS-HP-E	264	24	Up to 4x 1G/10G	SFP+	Port 1-24	Port 1-24	N/A	✓	1 RU
RG-S2910-24GT4SFP-UP-H	256	24	4x 1G	SFP	Port 1-24	Port 1-24	Port 1-4	✓	1 RU
RG-S2910-10GT2SFP-UP-H	256	8	2x 1G	SFP	Port 1-8	Port 1-8	Port 1-8	N/A	1 RU
RG-S2910-10GT2SFP-P-E	256	8	2x 1G	SFP	Port 1-8	Port 1-8	N/A	N/A	1 RU

## RG-S2900G-E SERIES

### OVERVIEW

Ruijie RG-S2900G-E V3 Series is a collection of next-gen multiservice switches, offering remarkable performance and enhanced security. Implementing an industry-leading hardware design and Ruijie's latest RGOS11.X modular operating system, the switches offer better table capacity, improved hardware processing performance, and easier user operation.

### KEY FEATURES

- Network Virtualization (VSU) Support
- Dynamic Network Protection (CPP and NFPP Technologies)
- SDN (OpenFlow v1.3) Ready and Layer 3 Routing Support (RIP, OSPF)
- Lightning Protection (up to 6KV)



Model	Switching Capacity (Gbps)	ARP Table Size	MAC Table Size	Downlink	Uplink		VSU	Power Supply	Rack Height
				GE (Base-T)	SFP	SFP/SFP+			
RG-S2952-E v3	256	1K	16K	48	4x 1G	SFP	✓	AC	1 RU
RG-S2928-E v3	256	1K	16K	24	4x 1G	SFP	✓	AC	1 RU

# Industrial Switch

## RG-IS2700G SERIES

### OVERVIEW

Ruijie RG-IS2706G Industrial Ethernet Switch is designed to power various industrial applications. The RG-IS2706G Switch offers abundant routing, switching and security protocols and advanced features including vibration resistance, wide temperature range, dust proof, and lightning arrester to cope with harsh operating environments. Ethernet Ring Protection Switching (ERPS) is another highlight to improve network flexibility, resiliency and security. The RG-IS2706G Switch provides customers with a robust, highly secure and easy-to-use switching infrastructure.

### KEY FEATURES

- Advanced Hardware Architecture
- Abundant Network and Security Features
- Flexible Deployment and Management







Model	Switching Capacity (Gbps)	ARP Table Size	Max VLANs	Downlink	Uplink		VSU	Power Supply	Installation
				GE (Base-T)	SFP	SFP/SFP+			
RG-IS2712G	36	Up to 260	4K	8	4x 1G/2.5G	SFP	✓	AC	DIN-Rail
RG-IS2712G-DC	36	Up to 260	4K	8	4x 1G/2.5G	SFP	✓	DC	DIN-Rail
RG-IS2706G	18	Up to 260	4K	4	2x 1G/2.5G	SFP	✓	AC	DIN-Rail

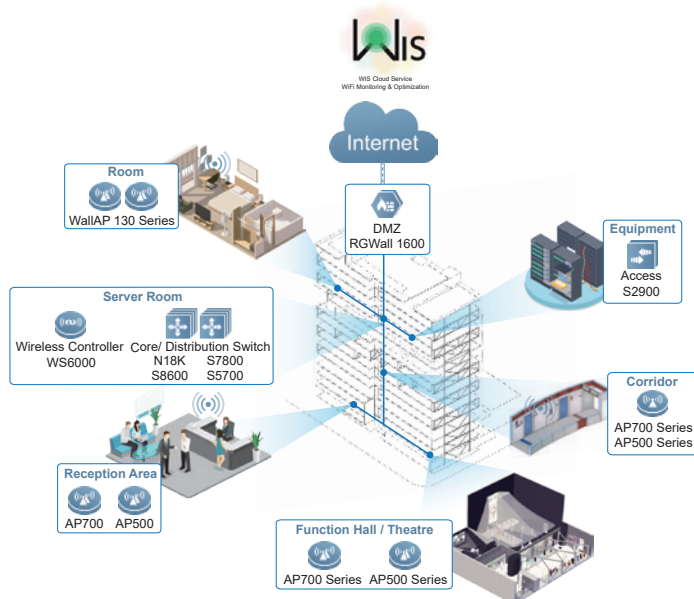
# Wireless

Wireless Controller, Software, Cloud Service, Mobile, Indoor & Outdoor AP Series

## PRODUCT FAMILY OF RUIJIE WIRELESS SERIES

Indoor AP Series	 <p>Indoor AP Series      Wall AP Series</p>
Outdoor AP Series	 <p>RG-AP630 Outdoor AP Series</p>
Mobile LTE WiFi Router	 <p>RG-MTFi-M520 Mobile 4G WiFi Router</p>
Wireless Controller Series (Appliance)	 <p>Wireless Controller Series</p>
Wireless Software	 <p>RG-MACC-BASE      RG-MACC-SAM      RG-SMP</p>
Cloud Service	 <p>WIS Optimization Service      Ruijie Cloud Service</p>

## APPLICATION SCENARIO 1



### TYPICAL SCENARIO FOR HOTEL/ DORMITORY / SHOPPING MALL

Highlights:

- Total ICT Solution: Wired/Wireless/Security/AAA
- FREE Wireless Optimization Cloud Service
- Scenario-Based AP Design:
  - AP700 series for high-density WiFi access
  - Wall AP130 series for guest room coverage
- Central Management by WS6000 series WLAN Controller

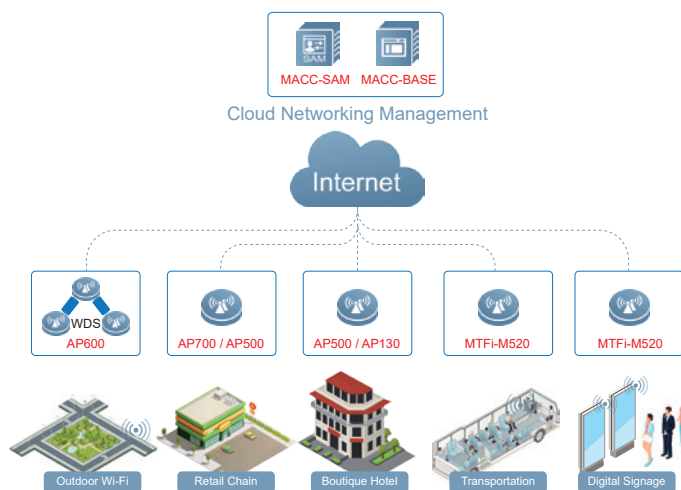
Typical Scenarios optimized with WIS Optimization Service

## APPLICATION SCENARIO 2

### TYPICAL SCENARIO FOR CLOUD MANAGEMENT SOLUTION

Highlights:

- Managed Cloud Solution for MSP / Telecom
- Support multi-tenant business
- Support real-time device monitoring (MACC-Base)
- Support Marketing WiFi (MACC-SAM)
- Scenario-Based AP options (Indoor/Outdoor/4G LTE)



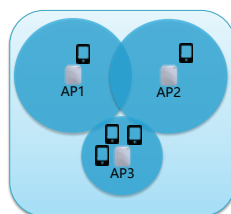
Typical Scenarios utilizing MACC-SAM and MACC-BASE

## KEY TECHNOLOGIES



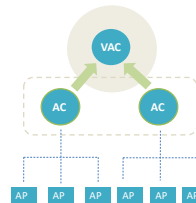
Patented Antenna - X-Sense

The Ruijie X-Sense Smart Antenna, the best-in-class wireless products delivering unprecedented network experience, provides full coverage by different antenna combinations offering a wide range of wireless signal paths.



Pre-ax Anti-Interference Technology

Industry's first Pre-ax technology, introducing 802.11ax space reuse ideas to enhance high-density, anti-jamming capability. Real-time transmit power adjustment enables each AP to set an exclusive power adjustment algorithm for each user based on user experience.



AC Virtualization Technology

"AC Virtualization" technology make branching extensions easy and convenient. Flexible extension for branches means new branches of ACs can be smoothly added into an already set up network, plug and play, without extra configuration.



# Indoor AP Series

## AP700 AND AP500 SERIES

### OVERVIEW

Equipped with Ruijie's highly acclaimed patented X-Sense Smart Antenna technology, the Ruijie RG-AP700 Wireless AP Series tops the class by supporting the latest 802.11ac Wave 2 standard and MU-MIMO. The RG-AP700 Series greatly improves the AP coverage performance and ensures an optimal access experience for smart mobile devices. Meanwhile the compact RG-AP500 Series delivers high-bandwidth, low-latency network connection at a low cost. The RG-AP500 Series is designed to serve the high-density, high-ceiling Wi-Fi scenarios with strong and consistent AP signals, ideal for sectors of higher education, government, healthcare, finance and enterprises.



### KEY FEATURES

- Best-performing and Cost-effective 802.11ac Wave 2 MU-MIMO
- Smart Antenna Optimized for High-density Scenario
- Cloud Management Ready
- Integrated BLE iBeacon<sup>1</sup>

Model	Wireless Data Rate	Max Client	Smart Antenna	Antenna	IEEE 802		2.4GHz	5GHz	Port		PoE Ports Input	Integrated BLE iBeacon
					11AC Wave1	11AC Wave2			GE			
RG-AP740-I	2.966Gbps	512	✓	4x4 MU-MIMO	✓	✓	✓	✓	2		2	✓
RG-AP740-I(C)	2.533Gbps	512	✓	4x4 MU-MIMO	✓	✓	✓	✓	2		2	✓
RG-AP720-I	1.267Gbps	256	✓	2x2 MU-MIMO	✓	✓	✓	✓	2		1	✓
RG-AP530-I V2	1.75Gbps	256	N/A	3x3 MIMO	✓	N/A	✓	✓	2		1	✓
RG-AP520(W2)	1.167Gbps	256	N/A	2x2 MU-MIMO	✓	✓	✓	✓	1		1	✓

## WALL AP SERIES

### OVERVIEW

Ruijie Wall AP Series is designed for wireless deployment in hotels, offices, residential buildings and settings alike, supporting the latest protocol, 802.11ac, and both FAT and FIT modes. The mini-size wall-mountable AP has the same size as a standard 86-type faceplate with integrated Ethernet and VoIP ports. Featuring a compact design and easy deployment, the AP enables zero disruption to the interior finishes and offers the best solution for scenarios with delicate interior design.



### KEY FEATURES

- IEEE 11ac Wave 2 Ready
- Fast and Easy WiFi Deployment
- Reuse Existing Cabling Structure for Investment Protection
- Standard 86-type Faceplate Cover (4 Color Options)

Model	Wireless Data Rate	Max Client	Antenna	IEEE 802	2.4GHz	5GHz	Port		PoE Ports Input
				11AC Wave2			Uplink	Downlink	
RG-AP130(W2)	1.167Gbps	32	2x2 MU-MIMO	✓	✓	✓	1 GE	4 GE	1

# Outdoor AP Series

## OUTDOOR AP SERIES

### OVERVIEW

Ruijie RG-AP630 Series is a family of top-class 802.11ac wireless access points for next-gen high-speed wireless network applications. The RG-AP630 Series consists of 4 models RG-AP630(IDA), RG-AP630(IDA2), RG-AP630(IODA) and RG-AP630(CD).



### KEY FEATURES

- 802.11ac Superior Wireless Performance
- Built-in Smart Antenna & Lightning Arrester
- Outstanding Environmental Adaptability (IP67, -40-55°C)
- Unique PoE OUT Design

Model	Wireless Data Rate	Max Client	Spatial Streams	Antenna		IEEE 802 11AC Wave1/2	2.4GHz	5GHz	Port		PoE Ports		Dimensions (W x D x H) (mm)
				External	Internal <sup>2</sup>				GE	SFP	Input	Output	
RG-AP630(IDA2)	2.533Gbps	512	4	Optional	DIR	11AC Wave2	✓	✓	2	1	1	N/A	276*246*90
RG-AP630(IDA)	1.75Gbps	256	3	Optional	DIR	11AC Wave1	✓	✓	2	1	1	1	276*246*90
RG-AP630(IODA)	1.75Gbps	256	3	Optional	O-DIR	11AC Wave1	✓	✓	2	1	1	1	276*246*90
RG-AP630(CD)	1.167Gbps	256	2	N/A	DIR	11AC Wave1	✓	✓	1	1	1	N/A	276*246*90

<sup>1</sup>Only available for RG-AP740-I, RG-AP740-I(C) and RG-AP720-I

<sup>2</sup>DIR for directional antenna and O-DIR for omnidirectional antenna

# Mobile LTE WiFi Router Series

## MOBILE LTE WIFI ROUTER

### OVERVIEW

Ruijie RG-MTFi-M520 exclusively offers you an industry 4G to wireless system and entertainment hub - all in one easy-to-use platform. Onboard with simultaneous dual-SIM link aggregation, the RG-MTFi-M520 transforms 3G/4G to wireless connectivity with ease. The device implements the latest LTE solution supporting advanced communication systems such as TD-LTE, FDD-LTE, TD-SCDMA and UMTS for streamlined LTE applications on the various scenario like transportation, digital signage, mobile/remote office and etc. Featuring the leading wave2 2X2 MIMO WiFi technology and 802.11ac standard, the RG-MTFi-M520 supports access rates of up to 300Mbps for 2.4GHz and 867Mbps for 5GHz for the best-in-class user experience on the go.

### KEY FEATURES

- High-speed Dual 4G LTE (Cat4) Design
- 802.11ac Concurrent Dual-Band WiFi with External Antenna Design
- Built-In Storage for Content Caching
- GPS Fleet Tracking
- Industrial-grade Design (IP54 Compliant, Anti-Shock Proof, 70°C Working Temp)
- Centralized Cloud Platform Management
- Social Marketing with Customized Ads Portal



Model	Ports		SIM Slot	Wireless Standard	Wireless Throughput	Concurrent User	Built-In HDD	VPN Protocol	Routing Protocol	Dimensions (W x D x H) (mm)
	LAN/WAN									
RG-MTFi-M520(IZEAA)	1		2	802.11ac/a/b/g/n 2x2 MIMO	1.166Gbps	Up to 60	N/A	OpenVPN and IPSec VPN <sup>3</sup>	RIP v1/v2 and OSPF	200*198*42mm
RG-MTFi-M520(ILEAA)	1		2	802.11ac/a/b/g/n 2x2 MIMO	1.166Gbps	Up to 60	128G SSD	OpenVPN and IPSec VPN <sup>3</sup>	RIP v1/v2 and OSPF	200*198*42mm

# Wireless Controller Series

## WIRELESS CONTROLLER SERIES

### OVERVIEW

Ruijie Wireless Controller Series is designed to support the next-generation high-speed wireless network. The Wireless Controllers can be deployed at either Layer 2 or Layer 3 network to communicate with wireless access point (AP) without any architecture or hardware changes, offering seamless and secure wireless control. The Wireless Controllers can manage up to 128 APs by default and a maximum capacity of 2,560 APs with license upgrade.

### KEY FEATURES

- Scalable up to 2,560 APs and 80K Clients
- Built-in with Advanced Wireless Radio Management and WIPS Security Protection
- Support Seamless L2/L3 Roaming
- Support N+1, N+N Resiliency
- Built-in with Portal Server for Web Authentication

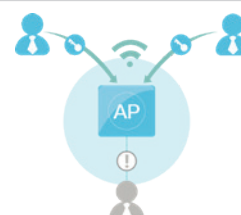


Model	Ports				Number of Manageable AP		Max Client	Portal Authentication	PPSK Authentication	Virtual AC/ AP	Dimensions (W x D x H) (mm)
	GE	SFP	SFP+	Expansion Slot	Default	Max					
RG-M8600E-WS-ED	N/A	N/A	2	N/A	128	2560	80K	✓	✓	✓	440 x 399 x 40.18
RG-M18000-WS-ED	N/A	N/A	2	N/A	128	2560	80K	✓	✓	✓	440 x 399 x 40.18
RG-WS6816	N/A	8	4	2	128	2560 / 4000 <sup>4</sup>	80K	✓	✓	✓	440 x 560 x 88.1
RG-WS6108	6	2	N/A	N/A	32	320 / 640 <sup>4</sup>	10K	✓	✓	✓	440 x 200 x 43.6
RG-WS6024	24	2	2	2	24	128	4K	N/A	N/A	N/A	440 x 260 x 44

## FEATURE HIGHLIGHT

### PPSK AUTHENTICATION

- High security by using different passwords for each user and device at individual SSID
- Simple deployment, allow for batch account creation
- Ease of use and offers the same experience as WPA / WPA2-PSK



Simple and Effective Wireless Security Practice





<sup>3</sup>IPSec VPN in the roadmap

<sup>4</sup>Indicates Wall AP

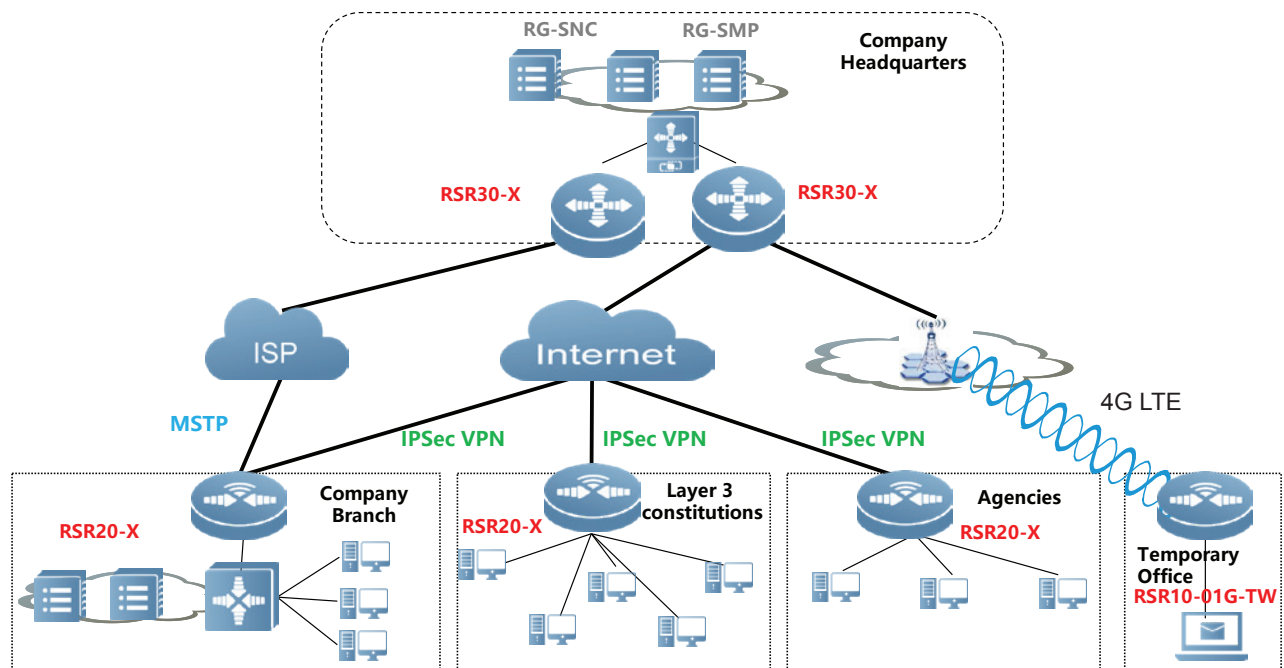
# Routers

## Aggregation and Access Routers

### PRODUCT FAMILY OF RUIJIE ROUTERS

Aggregation Router	 <p>RG-RSR30-X Series</p>
Access Routers	 <p>RG-RSR20-X Series</p>  <p>RG-RSR10-02E Series</p>  <p>RG-RSR10-01G-T(W) Series</p>

### APPLICATION SCENARIO



Corporate Branch Access Scenario

# Aggregation Router

## RG-RSR30-X SERIES

### OVERVIEW

Ruijie RG-RSR30-X Series subverts the conventional router design concept, it supports various interface card and scales the router design according to the actual requirements of the customer scenarios to minimize user investment.

### KEY FEATURES

- Advanced Hardware Processing Technologies
- Built-in High-Performance Service Features
- Highly Efficient Distributive Forwarding Technology
- Strong Routing Processing Capabilities



Model	Module Slot		Ports		Layer 3 Feature	Security	No. of IPsec VPN Tunnel	Power Supply	Power Redundancy	Rack Height
	SIC	HNM	LAN	WAN						
RSR30-X-SPU10 V1.5	2	2	9GE	9GE	Static Route, RIPv2, OSPFv2, BGP	SSH, Firewall, IPsec, ACL, DMVPN	500	AC/DC	✓	1 RU

# Access Router

## RG-RSR20-X SERIES

### OVERVIEW

The RG-RSR20-X Gigabit Router Series, integrating routing, switching and security into one piece, is Ruijie's next-generation access product as an extension of the successful RSR (Reliable Multi-Service Router) Series.

### KEY FEATURES

- Multi-Service Integration
- Multi-Service Line Rate Concurrency
- Ease of Use and Management
- High Reliability



Model	Module Slot		Ports		Layer 3 Feature	Security	No. of IPsec VPN Tunnel	Power Supply	Power Redundancy	Rack Height
	HSIC		LAN	WAN						
RSR20-X-28	4		24GE	4GE	Static Route, RIPv2, OSPFv2, BGP	SSH, Firewall, IPsec, ACL, DMVPN	150	AC	✓	1 RU

## RG-RSR10-02E SERIES

### OVERVIEW

Ruijie RG-RSR10-02E Router provides a next-generation network solution for enterprise branches while reducing deployment and operational costs. Ruijie RG-RSR10-02E Router offers superior manageability and reliability for enterprise edge networks at minimum costs.

### KEY FEATURES

- Integration of Routing and Switching
- Built-in 2-port GE WAN and 8-port FE LAN
- IPv6 Support
- 3G/4G WAN Module Support



Model	Module Slot		Ports		Layer 3 Feature	Security	No. of IPsec VPN Tunnel	Power Supply	Rack Height
	SIC		LAN	WAN					
RG-RSR10-02E	4		8FE	2GE	Static Route, RIPv2, OSPFv2, BGP	SSH, Firewall, IPsec, ACL, DMVPN	150	AC	1 RU

## RG-RSR10-01G-T(W) SERIES

### OVERVIEW

Ruijie RG-RSR10-01G-T(W) 4G Wireless Router is specifically designed for small and medium businesses to power next-gen network solutions. The leading device supports routing, switching, security, 4G/3G connection all in one to adapt to various deployment scenarios.

### KEY FEATURES

- All-in-One with 4G WAN, Wireless AP, Routing and Switching Features
- Wide 3G/4G Band Support (TDD/FDD/WCDMA/TD-SDMA/GSM/GPRS)
- Small Desktop Form Factor Design
- Out-of-box with Advanced Routing Features
- Built-in with 5 10/100BASE-T LAN Ports
- Industrial-grade & Compact Design



Model	Ports		Layer 3 Feature	Security	No. of IPsec VPN Tunnel	Wireless	3G/4G	Power Supply	Rack Height
	LAN								
RG-RSR10-01G-T(W) (v2.1)	8FE		Static Route, RIPv2, OSPFv2	SSH, Firewall, IPsec, ACL, DMVPN	100	802.11b/g/n	✓	AC	1 RU



# Software

## Cloud, AAA and Network Management Software

### RG-MACC-BASE

#### OVERVIEW

The Ruijie RG-MACC (Managed @ Cloud Center) is a revolutionary cloud management platform which supports unified management and configuration of APs and switches, as well as value-added marketing features, site survey, etc. The RG-MACC is designed for education, retail chain stores, shopping malls, hotels, transportation, small and medium-sized enterprises, network operators and settings alike. The RG-MACC is consisted of various feature modules, such as management, marketing and AAA (authentication, authorization and accounting), site survey planner, diagnostic tools, etc. The platform significantly reduces the total cost of investment while ensuring high usability of the RG-MACC.



#### KEY FEATURES

- All-in-one Platform
- Flexible Accounting & Billing Policy
- Social Marketing
- Multi-tenant Platform for Managed Service Provider

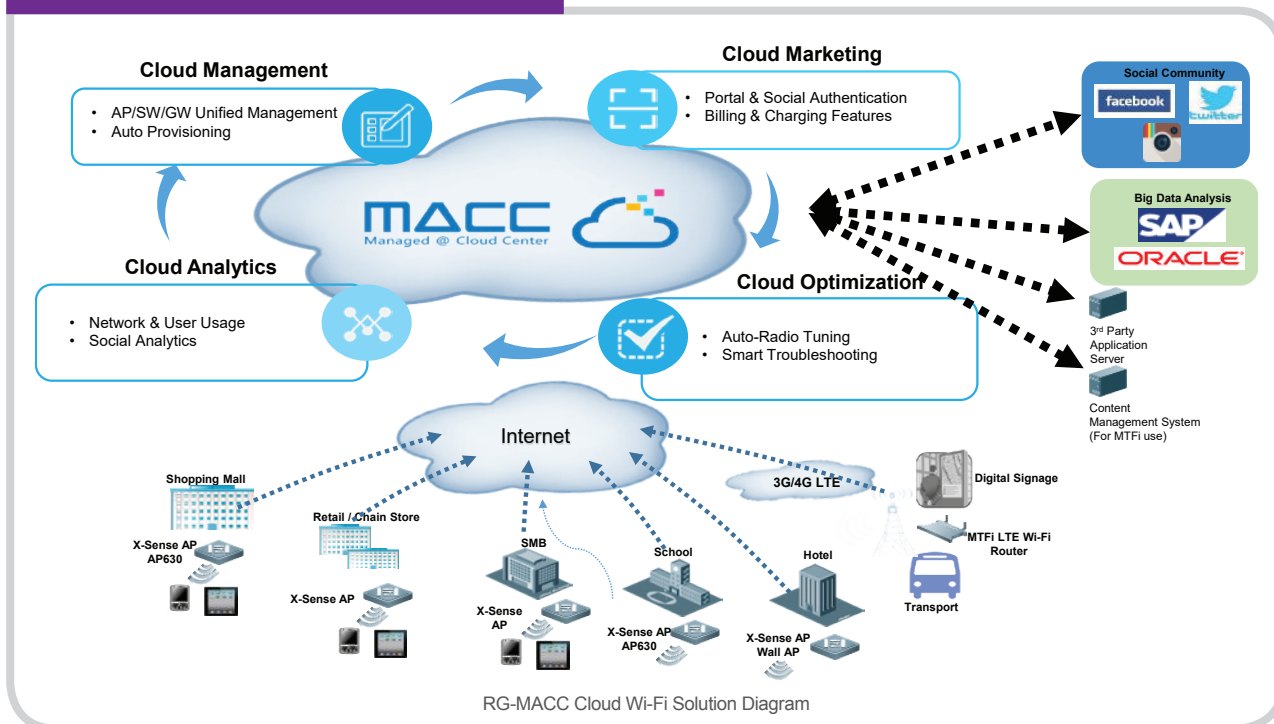
Deployment Mode	Load Balancing	Wireless Roaming
- Single and Multitenant	- AP Load Balancing & Band Steering	- L2 & L3 Roaming
Wireless Planning	Wireless Configuration	Monitoring
<ul style="list-style-type: none"> <li>- Location binding (Google Map)</li> <li>- Floor level AP Planning</li> <li>- Auto RF planning</li> <li>- Power &amp; Channel Optimization</li> <li>- WLAN Site Survey Planner</li> </ul>	<ul style="list-style-type: none"> <li>- Radio Configuration</li> <li>- SSID Configuration</li> <li>- Web Authentication Configuration</li> <li>- Log Configuration</li> <li>- System Configuration</li> <li>- 802.1x Authentication Configuration</li> </ul>	<ul style="list-style-type: none"> <li>- Global View Dashboard</li> <li>- User Overview</li> <li>- AP Overview</li> <li>- Switch Overview</li> </ul>

### RG-MACC SOLUTION COMPONENTS



RG-MACC Cloud Solution Components

## RG-MACC SOLUTION DIAGRAM



## RG-MACC-SAM (SECURITY X ACCOUNTING X MARKETING)

### OVERVIEW

RG-MACC-SAM (Security x Accounting x Marketing) is a single platform that provides AAA and captive portal service. It enables the clients to offer their guests public Wi-Fi and network access. Using a customizable splash portal, powerful proximity marketing, advertising, and analytic applications, they can provide an engaging Wi-Fi and network experience. RG-MACC-SAM is the next-generation AAA system with billing and identity management in mind. Highly capable to be deployed in a broadband service network wired for high-speed access such as hotels, apartment buildings, campuses, etc.

### KEY FEATURES

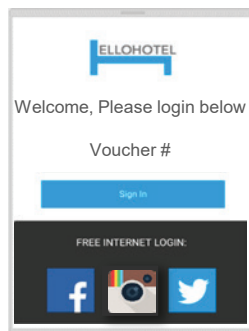
- Support Policy Management
- Support Flexible Billing Features (by time, data usage, speed)
- Support a wide range of Social Media Authentication (i.e. Facebook, Instagram, Twitter, etc.)
- Compatible with MACC-Base and WS6000 series controller



Deployment Mode	Captive portal Engine	Analytic Report
- Single and Multitenant	- Customizable Page and Login Journey	- Account, Login & Bandwidth Report
Authentication:	Social Media Login	Marketing Campaign
- MAC Authentication - Captive Portal - Email & SMS & Voucher - Active Directory/LDAP	- Facebook - Twitter - Instagram	- Ads Portal & Campaign Management - Coupon engine - Survey engine

## FEATURE HIGHLIGHT

RG-MACC-SAM empowers you to offer free or pay-per-use services in recurring or one-time option, you can set time-based policies or provide vouchers through PINs. These vouchers are 1 time account that is valid till the voucher expiry due date or exhausted of credit minutes. With RG-MACC-SAM, you can complete the general configuration for the voucher behavior by yourself easily.



Connect SSID, Ads and Login Pop Up

### Prepaid Account



Expiry Date: 30 Nov 2016  
Remark : Voucher  
Username : SY\_yN5wf

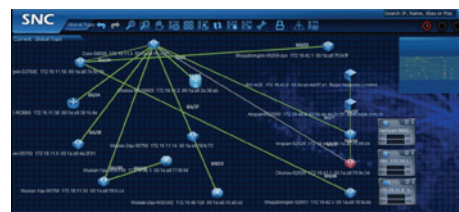


Voucher/QR Code Print Slip

## RG-SNC SMART NETWORK COMMANDER

### OVERVIEW

Ruijie RG-SNC (Smart Network Commander) is a network management system launched by Ruijie Networks especially designed for network performance management and configuration. With a friendly browser UI, the SNC provides an extensive array of features such as network topology display, device management, performance monitoring, configuration & software management, real-time alarm, log and report management.



### KEY FEATURES

- Unified Network Management
- Professional Topology Management
- Real-Time Performance Monitoring
- Rich and Customized Reports
- Proactive Alarm Notifications: Email & SMS<sup>5</sup>

Basic Component	
Topology Management	Alarm Management
<ul style="list-style-type: none"> <li>- Topology management</li> <li>- Online user info</li> <li>- Network diagnosis assistant</li> <li>- Event monitoring</li> <li>- IP/MAC/Port mapping table</li> </ul>	<ul style="list-style-type: none"> <li>- Real Time alarm monitoring</li> <li>- Self-define alarm rule &amp; time</li> <li>- Voice/email/SMS alarm notification</li> <li>- Historical alarm query</li> <li>- Trap &amp; syslog event monitoring</li> </ul>
Unified Device Management	Report & Log Management
<ul style="list-style-type: none"> <li>- Loop inspection</li> <li>- Key link inspection</li> <li>- Asset management</li> <li>- Hierarchical management</li> <li>- Interface batch management and configuration</li> <li>- Performance monitoring</li> <li>- Graphical ACL and QoS deployment</li> </ul>	<ul style="list-style-type: none"> <li>- Alarm report</li> <li>- Assets report</li> <li>- Security log</li> <li>- Operation log</li> <li>- Report export</li> </ul>

WLAN Component	
Wireless Management	
<ul style="list-style-type: none"> <li>- Hotspot management</li> <li>- Heat map diagram</li> <li>- Spectrum chart</li> <li>- Real-Time FFT</li> <li>- Wireless controller management</li> </ul>	<ul style="list-style-type: none"> <li>- AP management</li> <li>- End user management</li> <li>- Rogue AP countermeasure</li> <li>- Troubleshooting assistant</li> <li>- Remote Power Management</li> </ul>

## RG-SMP SECURITY MANAGEMENT PLATFORM

### OVERVIEW

The Ruijie RG-SMP (Security Management Platform) is an enterprise-class security management application that provides insight into and control of Ruijie security and network devices. The Ruijie RG-SMP offers comprehensive security management across a wide range of Ruijie security appliances, including Ruijie intelligent switches and Wireless solutions. The Ruijie RG-SMP is also compatible with other third-party networking devices with 802.1X protocol, enabling the AAA (authentication, authorization and accounting) network access control(NAC) policy according to user requirements.



### KEY FEATURES

- Unified Wired and Wireless Network Access Control
- Comprehensive Identity Authentication
- QR-Code Guest Authorization
- Simple Web Operation
- Detailed Security Track Record

Key Features	
<ul style="list-style-type: none"> <li>- Extensive Network Access Control</li> <li>- Third-party Certification System Integration</li> <li>- Learning and Support for Multi-element Binding</li> <li>- User Management</li> <li>- User Authentication</li> </ul>	<ul style="list-style-type: none"> <li>- End Point Compatibility</li> <li>- Host Security Management</li> <li>- Asset Management</li> <li>- Network Security Management</li> <li>- User-based Internet Application Control</li> </ul>

<sup>5</sup>SMS alert function requires Ruijie RSR 4G router (purchased separately)

# Firewall

## Next-Generation Firewall

### THE NEW NEXT GENERATION FIREWALL

The New Next-generation Firewall is an advanced version of Ruijie's previous generation firewall with comprehensive application-layer security design to identify users, applications and content in the network traffic and perform corresponding security control operation. New high-performance dual-engine processing mode is adopted in the new next-generation firewall to offer superior performance, security and reliability.



Features of Next-generation Firewall

### FULL PROTECTION ACROSS LAYER 2 TO 7

The New Next-generation Firewall provides full protection across layer 2 to 7

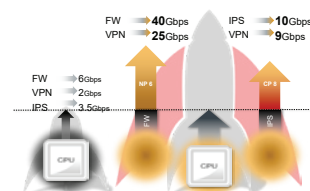
- Firewall
- User Authentication
- Device Recognition & Management
- IPS/DPI
- APP Control
- Traffic Management
- Anti-Virus
- Web Content Filtering
- Anti-Spam
- Data Loss Prevention (DLP)



Features of Next-generation Firewall

### FAST PERFORMANCE

The Ruijie's Next-generation Firewall has 10x the average data center firewall performance, 5x NGFW performance and meets bandwidth development and requirements.



Next-generation Firewall

### RG-WALL 1600 SERIES

#### OVERVIEW

Ruijie RG-WALL 1600 Firewall Series is a collection of next-generation firewall offering security, routing and switching features all in one with extensive interface varieties and flexible configuration. The firewall is an ideal partner for government, medical, enterprise, network operator, finance, education and military network deployments. Teaming up with Ruijie's leading switch and router series, the firewall can act as a network gateway and provide a secure connection between different policy areas, providing users with an end-to-end solution that best fits their actual needs.

#### KEY FEATURES

- Hardware Acceleration with Superior Performance (From 1.5Gbps to 80Gbps FW Throughput)
- Built-in Advanced Firewall, IPS, Anti-X Features Protection
- Security, Switching & Routing All-In-One (Up to 42 GE Ports & 8 10GE Ports)
- Comprehensive Logs and Audits (With Internal Storage)



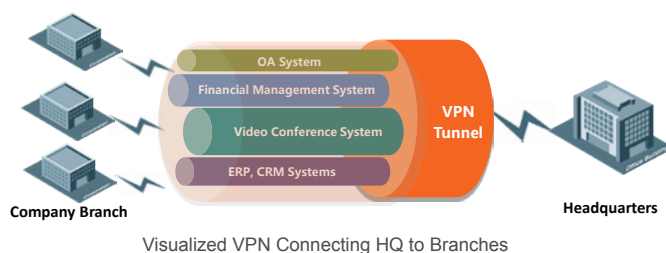
Model	Fixed Ports	Firewall Throughput (64/512/1518 bytes)	Firewall Latency	Concurrent Sessions	New Sessions/Sec	IPsec VPN Throughput	IPsec Tunnels	Antivirus Throughput	Power Redundancy
RG-WALL 1600-X9300	18 GE ports (RJ45), 8 SFP+ ports, 16 SFP ports	80Gbps	3μs	12Mil	250K	50Gbps	10K	Up to 13Gbps	Support (Integrated)
RG-WALL 1600-M6600	10 GE ports (RJ45), 8 SFP ports	16Gbps	3μs	3.2Mil	200K	14Gbps	2K	Up to 2.5Gbps	Support (External FRPS-100)
RG-WALL 1600-M5100	42 GE ports (RJ45), 2 SFP ports	4Gbps	6μs	3.2Mil	77K	1.3Gbps	2K	Up to 1.1Gbps	Support (External FRPS-100)

# Gateway

## Security Gateway

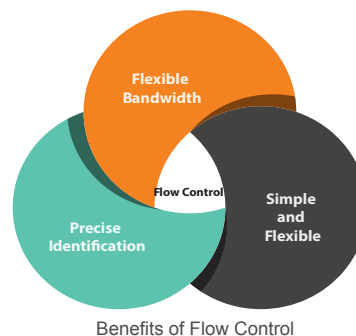
### VPN VISUALIZATION

The flow in the VPN tunnel is controllable and visible, and the business security has no blind angle. We can view and control the traffic flow in the VPN tunnel, establish a visual VPN network, and provide security for key business through VPN.



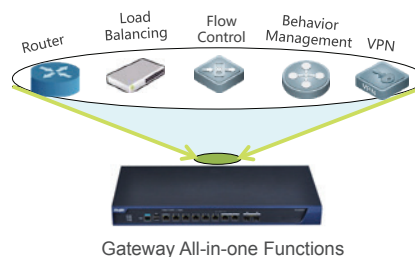
### FLOW CONTROL

Flow control is based on user or application bandwidth security, distribution, speed limit. It can accurately identify more than 30 kinds of applications, such as P2P application, streaming media, enterprise office system, etc., with more than 1500 application characteristics, and realize fine and reasonable bandwidth resource management. By methods of intelligent flow management, the bandwidth is free to be used freely when the bandwidth is available and be distributed according to demands. When bandwidth is tight, different traffic lights are opened on different channels to ensure the high-speed operation of key business.



### ALL-IN-ONE GATEWAY

Ruijie's all-in-one gateway combines functions of router, flow control, load balancing, behavior management, soft AC and VPN device in one. With multiple network service functions integrated, the next generation gateway are cost effective, optimized for easy deployment and designed to adapt to different networking environments, enhancing user experience and network flexibility.



### RG-EG3000XE-I/UE-I SERIES

#### OVERVIEW

Ruijie RG-EG-I Series is a series of multi-functional gateway products launched by Ruijie for overseas markets. It integrates multiple gateway functions and has an abundance of ports to adapt to different networking environments, helping users form a flexible network and enhance network experience of users.

#### KEY FEATURES

- Simple configuration, support WEB and Ruijie cloud management solutions<sup>6</sup>
- Built-in DPI engine to recognize and control HTTP, P2P, mail, software, operating system updates and other network applications
- Integrated routing, flow control, URL filtering, IPsec VPN and other functions
- Free URL library, application protocol library and software version upgrade, no license restrictions



Model	Fixed Ports	Throughput	Concurrent Sessions	New Sessions/Sec	IPsec VPN Throughput	IPsec Tunnels	Content Filtering	Power Redundancy
RG-EG3000XE-I	8Combo ports 8SFP+ ports 2QXS ports	10Gbps	1600W	18W	2.3Gbps	2000	✓	Support
RG-EG3000UE-I	8 Combo ports 8 SFP+ ports	7Gbps	800W	12W	1.5Gbps	2000	✓	Support

<sup>6</sup>Future Release Support for EG Cloud Management



# Cloud Service

## Wireless Intelligent Service (WIS) and Ruijie Cloud Service

### WIRELESS INTELLIGENT SERVICE (WIS)




#### OVERVIEW

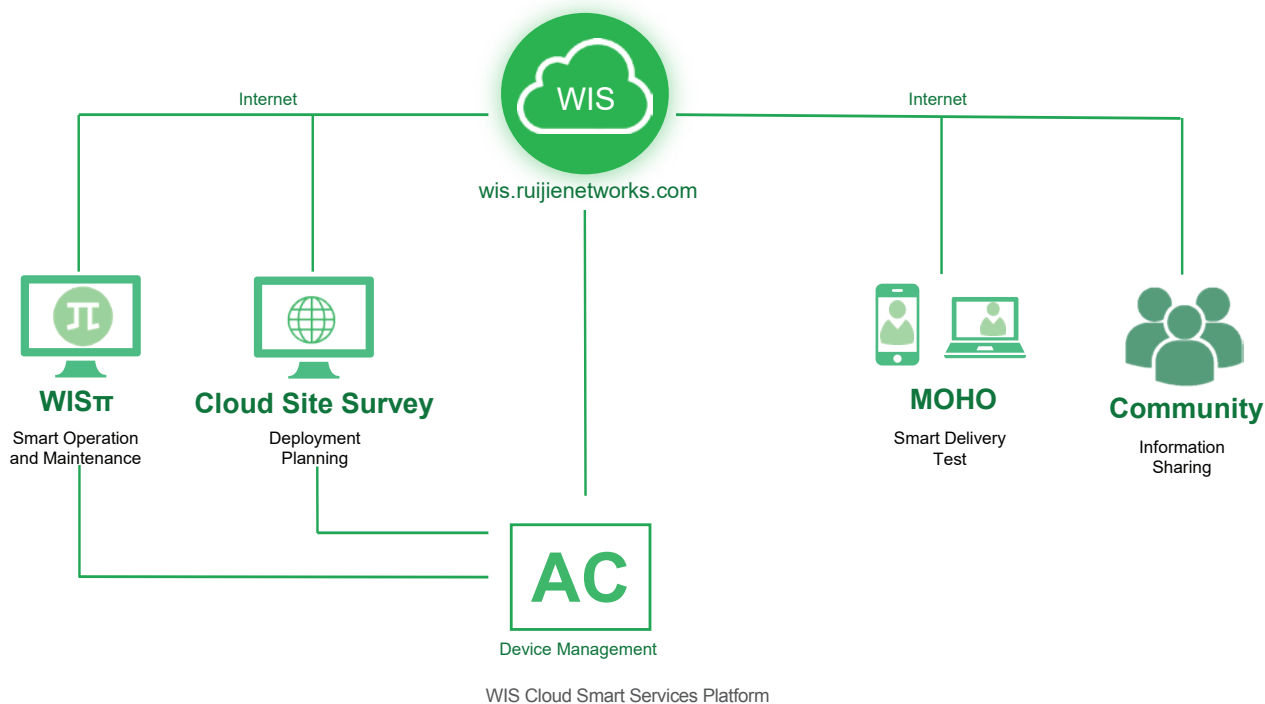
The Ruijie Wireless Intelligent Service (WIS) is a revolutionary smart cloud service platform which supports smart operation and maintenance of devices, cloud site survey, Wi-Fi testing, operation diagnosis, smart network optimization, etc. The WIS is consisted of various components, including the WIS $\pi$ , MOHO and cloud site survey planner, replacing manpower with automated intelligent tools while significantly reducing the total cost of investment.

#### KEY FEATURES

- FREE Public Cloud Service
- One-click Wireless Optimization
- Cloud Site Survey for Deployment Planning
- Smart Mobile APPS for provisioning and troubleshooting



<b>WIS<math>\pi</math></b> 	<b>MOHO</b> 	<b>CLOUD SITE SURVEY PLANNER</b> 
Specifications	Specifications	Specifications
<ul style="list-style-type: none"> <li>- Overview Monitoring</li> <li>- Experience Monitoring</li> <li>- Clients Monitoring</li> <li>- Devices Monitoring</li> <li>- One-click Optimization</li> <li>- RRM Optimization</li> <li>- Intelligent Access</li> <li>- Config Planning</li> <li>- Data Analysis</li> </ul>	<ul style="list-style-type: none"> <li>- Main Page WiFi Testing</li> <li>- Devices Checking</li> <li>- Interference Monitoring</li> <li>- AP Locating</li> <li>- Network Speed Test</li> <li>- Ping/Telnet/Tracert</li> <li>- Single Point Testing</li> <li>- Roaming Test</li> <li>- Test Record</li> </ul>	<ul style="list-style-type: none"> <li>- Automatic Obstacles Identification</li> <li>- Screenshot Export</li> <li>- Signal Simulation</li> <li>- Manual Obstacle Drawing</li> <li>- Site Survey Report</li> </ul>



## RUIJIE CLOUD SERVICE

### OVERVIEW

Ruijie Cloud Service is Ruijie's easy and efficient cloud solutions for chain stores, small and medium-sized businesses and boutique hotels. The solutions include equipment deployment, monitoring, network optimization and operational lifecycle management; enabling customers with simple plug and play deployment and operation and maintenance. Meeting the needs for automatic cloud RF planning and user experience monitoring, it also supports mobile monitoring and alert, and fast provisioning by QR-Code scanning. At the same time it provides flexible wireless user access control features, including high security "One person, one machine and one password" PPSK, built-in cloud Portal and Facebook certification.



### KEY FEATURES

- Unified Device Management
- Fast Provisioning by Mobile APP
- Secure PPSK Authentication for Staff
- Captive Portal & Social Authentication for Guest
- Mobile APP Monitoring & Alert

Deployment	Monitoring
<ul style="list-style-type: none"> <li>- Seamless Provisioning with Mobile APP</li> <li>- Startup Wizard Guide for Initial Setup</li> <li>- Batch Import for Device Activation</li> <li>- Device Activation by QR-Code Scanning</li> <li>- Flexible Device Group Architecture</li> </ul>	<ul style="list-style-type: none"> <li>- Global Google Map Dashboard</li> <li>- Network/Site Overview (Network total user, total traffic)</li> <li>- Device Real-time Monitoring and Alert</li> <li>- User Experience &amp; Summary Report</li> <li>- Mobile Network Monitoring and Alert (Mobile APP)</li> </ul>
Optimization	Troubleshooting
<ul style="list-style-type: none"> <li>- Auto RF Planning (Power &amp; Channel Optimization)</li> <li>- Band Steering</li> </ul>	<ul style="list-style-type: none"> <li>- Web-CLI Remote Debugging Tool</li> </ul>
Authentication	Advanced Features
<ul style="list-style-type: none"> <li>- Hotspot WiFi Portal (1-Click Authentication)</li> <li>- Facebook Login</li> <li>- PPSK Authentication for Staff</li> </ul>	<ul style="list-style-type: none"> <li>- Load Balancing</li> <li>- Wireless L2&amp;L3 Roaming</li> <li>- Multi-level Account Management</li> <li>- Firmware Auto Upgrade</li> </ul>

### Cloud Management

- Unified Device Management
- Flexible Group Configuration

### Mobile Operation

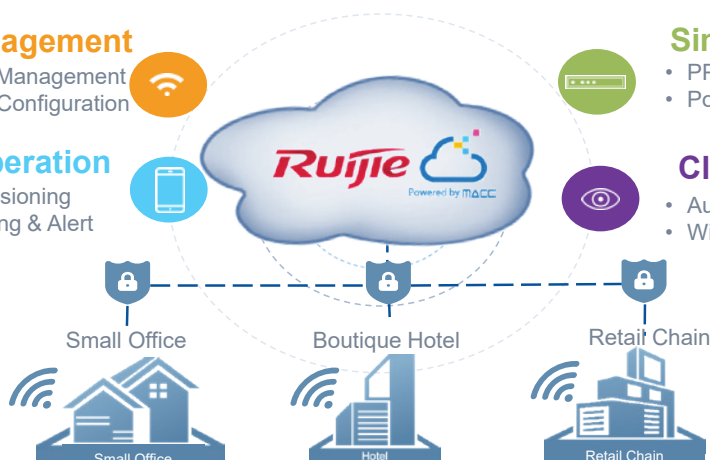
- Seamless Provisioning
- Mobile Monitoring & Alert Notifications

### Simplified Security

- PPSK Staff Authentication
- Portal Authentication (Social Login)

### Cloud Analytics

- Automated WiFi Optimization
- WiFi Experience Analysis



Ruijie Cloud Solution Highlights

## SOLUTION COMPONENTS

### SMB Switches



#### XS-S1960 Switch Series

8/24/48 Port GE PoE/Non-PoE models  
Enterprise Layer 2 Features  
Network Security Protection (NFPP)  
Conformal Coating Protection

### SMB AP

#### Indoor AP



#### AP720-L

802.11ac Wave2  
Dual Band  
Max 1167Mbps



#### AP710

802.11ac Wave1  
Dual Band  
Max 733Mbps

#### Wall AP






#### AP130(L)

802.11ac Wave1  
Dual Band  
4-Color Plate Option

# Small Business

Switches, Wireless, Firewall, Gateway and Cloud Service

## PRODUCT FAMILY OF RUIJIE SMALL BUSINESS SERIES

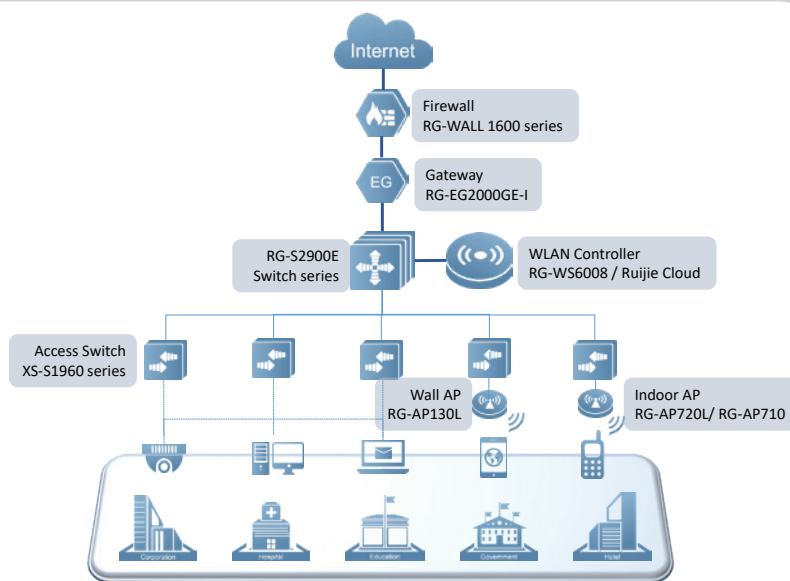
Switches	 <p>XS-S1960 Series</p>  <p>RG-S1800 Series</p>
Wireless	 <p>RG-AP720(L) and AP710 Series</p>  <p>RG-AP130(L) Series</p>
Wireless Controller	 <p>RG-WS6008 Series</p>
Firewall	 <p>RG-WALL 1600-S3600</p>  <p>RG-WALL 1600-S3200</p>  <p>RG-WALL 1600-S3100</p>
Gateway	 <p>EG2000CE-I Series</p>
Cloud Service	 <p>Ruijie Cloud Service</p>

## APPLICATION SCENARIO

Ruijie provides comprehensive cost-effective enterprise-grade network solution to SMB market, consisting of switches, wireless, gateways, security, cloud services etc. to SMB market.

### Highlights

- Scenario-based AP options(Indoor/wall AP)
- Flexible WLAN Management: Appliances or Cloud-based
- Reliable switch design with conformal coating protection
- Layer 7 application protection and web filtering



Small Business Series Typical Application

# Switch

## XS-S1960 SERIES

### OVERVIEW

Ruijie XS-S1960 Series is a collection of next-gen SMB switches for enterprise edge, branch office, and SMB deployments. The Switch Series is easy to use and deploy, and delivers consistent wired/wireless user experience with unified cloud management.



### KEY FEATURES

- Network Virtualization (VSU) Support
- Dynamic Network Protection (CPP and NFPP Technologies)
- Convenient deployment of cloud management (plug & play)
- Design for durability (conformal coating & fanless design)

Model	Switching Throughput (Gbps)	Downlink	Uplink		PoE Output ports			Power Supply	Rack Height
		GE (Base-T)	SFP	SFP/SFP+	PoE	PoE+	HPoE		
XS-S1960-48GT4SFP-H	256	48	4x 1G	SFP	N/A	N/A	N/A	AC	1 RU
XS-S1960-24GT4SFP-UP-H	256	24	4x 1G	SFP	Port 1-24	Port 1-12	Port 1-4	AC	1 RU
XS-S1960-24GT4SFP-H	256	24	4x 1G	SFP	N/A	N/A	N/A	AC	1 RU
XS-S1960-10GT2SFP-P-H	256	8	2x 1G	SFP	Port 1-8	Port 1-8	Port 1-8	AC	1 RU

## RG-S1800 SERIES

### OVERVIEW

Ruijie RG-S1800 Series Unmanaged Switches deliver basic network connectivity and reliability for small businesses which are easy on the budget and without all the complexity. These switches provide all of the features, expandability, and investment protection you expect from Ruijie, with no installation software and zero configuration required. Just plug it in, connect your computers and other business equipment, and the device will be ready to use.



### KEY FEATURES

- Affordable 10/100/1000Mbps speeds for even the most bandwidth-hungry applications
- Desktop or rack mountable models with 8 to 26 ports
- Power over Ethernet Plus models to provide power to IP phones, access points, cameras and other devices
- Work right out of the box: plug and play with no setup

Model	Switching Throughput (Gbps)	Downlink	Uplink		PoE Output ports		Power Supply	Rack Height
		GE (Base-T)	SFP	SFP/SFP+	PoE	PoE+		
RG-S1826G-P	48	24	2x 1G	N/A	Port 1-24	Port 1-24	AC	1 RU
RG-S1826G	48	24	2x 1G	N/A	N/A	N/A	AC	1 RU
RG-S1826	48	24x 100M	2 Combo	2 Combo	N/A	N/A	AC	1 RU
RG-S1818G	48	16	2x 1G	N/A	N/A	N/A	AC	1 RU
RG-S1810G-P	48	8	2x 1G	N/A	Port 1-8	Port 1-8	AC	1 RU
RG-S1809-P	3.6	8x 100M	N/A	N/A	Port 1-8	Port 1-8	DC <sup>7</sup>	desktop
RG-S1808G	16	8	N/A	N/A	N/A	N/A	AC	1 RU
RG-S1808	1.6	8x 100M	N/A	N/A	N/A	N/A	DC <sup>7</sup>	desktop

## S1800 FEATURE HIGHLIGHTS



10/100/1000Mbps Speeds



Desktop or Rack Mountable



PoE Plus



Zero-Configuration

<sup>7</sup>With AC adapter

# Indoor AP Series

## RG-AP720(L) AND AP710 SERIES

### OVERVIEW

Ruijie AP720-L / 710 are dual-radio, dual-band 802.11ac wireless access point products launched by Ruijie for the SMB market. It supports Wave2 features up to 1.167Gbps. AP720-L / 710 both support the free Ruijie Cloud Management Platform with and Cloud AC for faster online experience, shorten the construction period, reduce costs and improve the efficiency of wireless management and maintenance. Designed for SMB, AP720-L / 710 are very cost-effective and are mainly used in primary and secondary education institutes, small to medium enterprises, boutique hotels, retail chains and other industries for their indoor scenarios.



### KEY FEATURES

- Best-performing and Cost-effective 802.11ac AP for Small Business
- FREE bundled with Ruijie Cloud Management Service
- Hybrid management mode: Cloud Controller/Hardware Controller/Standalone
- Support PPSK & Hotspot Guest Portal<sup>8</sup>

Model	Wireless Data Rate	Max Client	Antenna	IEEE 802		2.4GHz	5GHz	Port		PoE Ports
				11AC Wave1	11AC Wave2			GE	Input	
AP720-L	1.167Gbps	256	2x2 MU-MIMO	✓	✓	✓	✓	1		1
AP710	733Mbps	256	2x2 MIMO	✓	N/A	✓	✓	1		1

# Wall AP Series

## RG-AP130(L) SERIES

### OVERVIEW

Ruijie Wall AP Series is designed for wireless deployment in hotels, offices, residential buildings and settings alike, supporting the latest protocol, 802.11ac, and both FAT and FIT modes. The mini-size wall-mountable AP has the same size as a standard 86-type faceplate with integrated Ethernet and VoIP ports. Featuring a compact design and easy deployment, the AP enables zero disruption to the interior finishes and offers the best solution for scenarios with delicate interior design.



### KEY FEATURES

- IEEE 11ac Standard with 2x2 MIMO
- Fast and Easy WiFi Deployment
- Reuse Existing Cabling Structure for Investment Protection
- Standard 86-type Faceplate Cover (4 Color Options)

Model	Wireless Data Rate	Max Client	Antenna	IEEE 802	2.4GHz	5GHz	Port		PoE Ports
				11AC Wave1			Uplink	Downlink	
RG-AP130(L)	1.167Gbps	Up to 32	2x2 MIMO	✓	✓	✓	1 GE	4 FE	1

# Wireless Controller Series

## RG-WS6008 SERIES

### OVERVIEW

Ruijie Wireless Controller Series is designed to support the next-generation high-speed wireless network. The Wireless Controllers can be deployed at either Layer 2 or Layer 3 network to communicate with wireless access point (AP) without any architecture or hardware changes, offering seamless and secure wireless control. The Wireless Controllers can manage up to 32 APs by default and a maximum capacity of 400 APs with license upgrade.



### KEY FEATURES

- Scalable up to 400 APs and 6.4K Clients
- Built-in with Advanced Wireless Radio Management and WIPS Security Protection
- Support Seamless L2/L3 Roaming
- Support N+1, N+N Resiliency
- Built-in with Portal Server for Web Authentication

Model	Ports		Number of Manageable AP		Max Client	Portal Authentication	PPSK Authentication	Virtual AC/AP	Dimensions (W × D × H) (mm)
	GE	SFP	Default	Max					
RG-WS6008	6	2	32	200 / 400 <sup>9</sup>	6.4K	✓	✓	✓	440 × 200 × 43.6

27 <sup>8</sup>Ruijie Cloud Management required

<sup>9</sup>Indicates Wall AP



# Firewall

## RG-WALL 1600 SERIES

### OVERVIEW

Ruijie RG-WALL 1600 Firewall Series is a collection of next-generation firewall offering security, routing and switching features all in one with extensive interface varieties and flexible configuration. The firewall is an ideal partner for government, medical, enterprise, network operator, finance, education and military network deployments. Teaming up with Ruijie's leading switch and router series, the firewall can act as a network gateway and provide a secure connection between different policy areas, providing users with an end-to-end solution that best fits their actual needs.



### KEY FEATURES

- Hardware Acceleration with Superior Performance
- Built-in Advanced Firewall, IPS, Anti-X Features Protection
- Security, Switching & Routing All-In-One
- Comprehensive Logs and Audits (With Internal Storage)

Model	Fixed Ports	Firewall Throughput	Firewall Latency	Concurrent Sessions	New Sessions/Sec	IPsec VPN Throughput	IPsec Tunnels	Antivirus Throughput
RG-WALL 1600-S3600	16 GE ports (RJ45)	Up to 3.5Gbps	4μs	1.5Mil	4K	1Gbps	200	35Mbps / 65Mbps
RG-WALL 1600-S3200	10 GE ports (RJ45)	Up to 2Gbps	3μs	1Mil	10K	2Gbps	200	75Mbps/ 100Mbps
RG-WALL 1600-S3100	10 GE ports (RJ45)	Up to 1.5Gbps	4μs	500K	4K	1Gbps	200	35Mbps / 50Mbps

# Gateway

## RG-EG2000CE-I SERIES

### OVERVIEW

Ruijie RG-EG-I Series is a series of multi-functional gateway products launched by Ruijie for overseas markets. It integrates multiple gateway functions and has an abundance of ports to adapt to different networking environments, helping users form a flexible network and enhance network experience of users.



### KEY FEATURES

- Simple configuration, support WEB and Ruijie cloud management solutions<sup>10</sup>
- Built-in DPI engine to recognize and control HTTP, P2P, mail, software, operating system updates and other network applications
- Integrated routing, flow control, URL filtering, IPsec VPN and other functions
- Free URL library, application protocol library and software version upgrade, no license restrictions

Model	Fixed Ports	Hard Disk	Throughput	Concurrent Sessions	New Sessions/Sec	IPsec VPN Throughput	IPsec Tunnels	Content Filtering
RG-EG2000CE-I	6GE ports 2Combo ports	500GB	230Mbps	400K	5K	160Mbps	50	✓

## 3-YEAR WARRANTY FOR SMB PRODUCTS

Ruijie's Enterprise and Small Business products are all bundled with 3-year product warranty free of charge (FOC). Ruijie warrants to the original end-user customer that our hardware products are free from defects in material and workmanship under normal use for the duration of the warranty period. Our standard warranty period for the Enterprise and Small Business products is 3 years from the date of shipment to the customer. In-warranty products may be eligible for one-to-one new replacement. With the purchasing of New Warranty 2.0 option, the products are eligible for one-to-one new replacement within the warranty period. Customers can enjoy the new replacement service directly from our authorized resellers or distributors, without the need to wait for standard RMA shipping/returning service to ensure that customers' business can continue to run smoothly without any service interruption.








<sup>10</sup>Future Release Support for EG Cloud Management

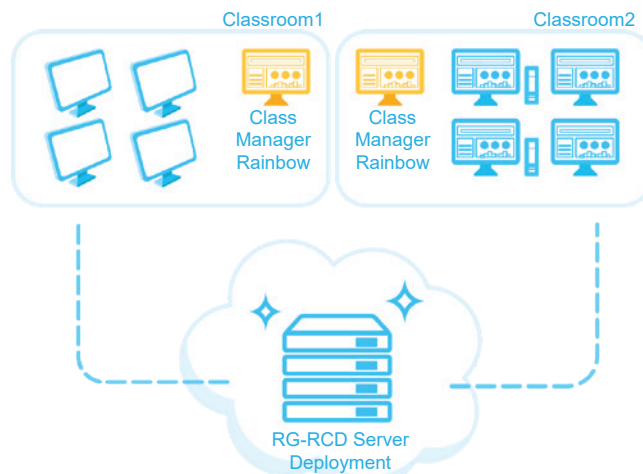
# Cloud Class

Server, Thin Client and Software

## PRODUCT FAMILY OF RUIJIE CLOUD CLASS

Server	 RG-RCD6000 V3	 RG-RCD4500 V3
Thin Client	 RG-Rain100 V2	
Software	 Class Manager Rainbow Teacher's Terminal	 Class Manager Rainbow Student's Terminal

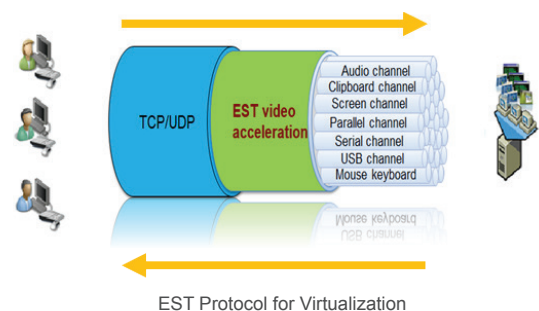
## APPLICATION SCENARIO



Multiple Classrooms Deployment Using Cloud Class

## CLOUD CLASS ENHANCED STREAM TRANSMISSION (EST)

Enhanced Stream Transmission (EST) is a protocol developed by Ruijie that provides high transmission efficiency for desktop virtualization using minimal resources. Besides providing multiple output channels (video, USB, keyboard etc.) as shown in diagram, EST also enhances video decoding and audio restoration quality, in order to provide a high-quality user experience.



## Server

### RG-RCD V3 SERIES SERVER SERIES

#### OVERVIEW

RG-RCD server is one of the three main components for Cloud Class, a combination of advanced and innovative technologies. Image bootup and I/O acceleration shortens the time required for Cloud Class to start up, giving a better user experience. There are two main RG-RCD servers that best fit primary school and high school scenarios.

RG-RCD6000 V3 can support up to 60 thin clients while RG-RCD4500 V3 can support up to 45 thin clients. At the same time, the motherboard is sprayed with conformal coating to prevent the oxidization of electronics components.

#### KEY FEATURES

- RG-RCD server to be powered up within 180s whilst operating system within 30s
- The motherboard is sprayed with conformal coating, defends oxidation
- Installed RG-RCDOS



Model	Form Factor	CPU	Drive Capacity	RAM	Ethernet Port	COM Port	USB Port	HDD Expansion Slot
RG-RCD6000 V3	2U Standard Server	2*Xeon E5-2650 V4	1TB SATA3 + 720GB SSD	6x16GB DDR4	2x1GbE	1	3xUSB2.0	4
RG-RCD4500 V3	2U Standard Server	2*Xeon E5-2640 V4	1TB SATA3 + 480GB SSD	5x16GB DDR4	2x1GbE	1	3xUSB2.0	5

## Thin Client

### CLOUD TERMINAL RG-RAIN SERIES

#### OVERVIEW

RG-Rain is one of the three main components for Cloud Class, operating based on mainstream X86 processors. RG-Rain series uses integrated fan-less design and is powered by a high performance CPU that consumes low power wattage. It is also embedded with tiny flash capacity, IO ports and installed with RainOS. Its reliable design and high-quality appearance can be applied on various classroom scenarios, widening Cloud Class usage flexibility.



#### KEY FEATURES

- Remote Power On and Off
- Fan-less design, Zero-Maintenance
- Consumes only 6W, Environment-Friendly & Energy Saving

Model	CPU	Storage Capacity	RAM	USB	HDMI	VGA	Ethernet Port	Headphone Jack	Power Consumption	Dimension (W×D×H) (mm)
RG-Rain100 V2	Intel z8350	8GB	4GB	5xUSB2.0, 1xUSB3.0	1	1	1x10/100/1000M	1	6W	143×143×35

## Software

### CLASS MANAGER RAINBOW

#### OVERVIEW

A computer room without multimedia teaching management system, is like a classroom without a blackboard. RG-Class Manager Rainbow is a multimedia teaching management software developed for interaction between teacher and students. With RG-Class Manager Rainbow, it eliminates traditional teaching methods that are dull and boring. Students are more encouraged to participate in the class so that they can learn and get more knowledge. RG-Class Manager Rainbow is designed based on proprietary advanced technology that works seamlessly with Cloud Class virtualization technology. As of today, it is the best teaching system among the rest of the desktop virtualization solutions.

#### KEY FEATURES

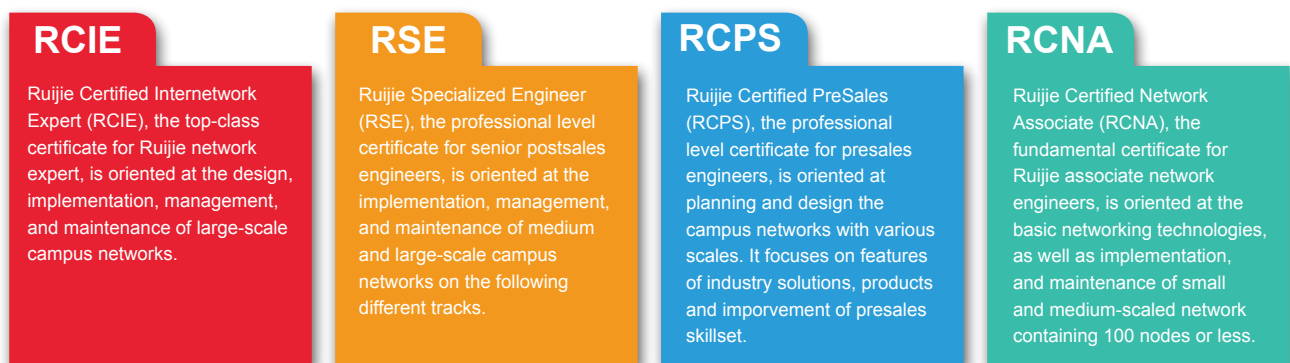
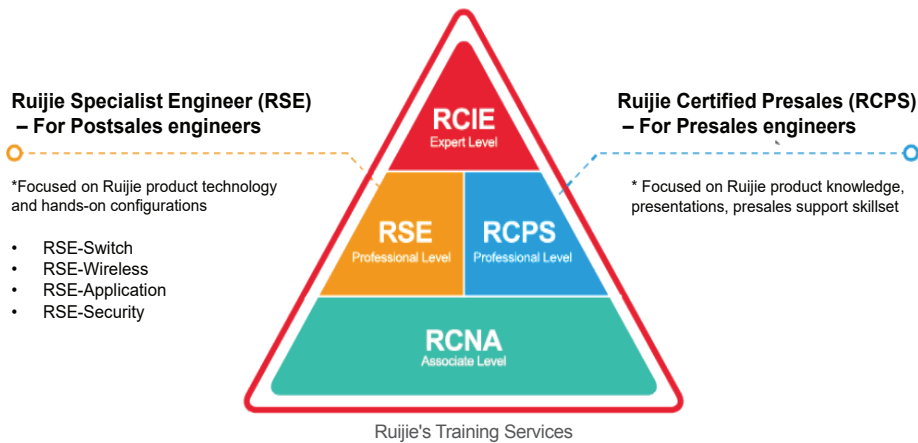
- Multiple OS Switching Within 120s
- "1080P" Screen Broadcast
- Remote control
- Multiple Files Sharing



Basic functions	Image Switching	Screen Broadcast	Screen Monitoring	Power On/Off with one button	Screen Lock	Multiple Files Sharing	Disable internet
Advanced functions	Workspace	Class Control Features	Test	Voice Broadcast	Remote Assistance	Reward	Group Teaching

# Training & Services

Ruijie has its own technical training and certification system. Those with Ruijie certification will have professional network knowledge, network skills and knowledge on specific technical fields and positions, which could bring their employers great value and benefits. Ruijie Certification system includes Ruijie Certified Internetwork Expert (RCIE), Ruijie Specialized Engineer (RSE), Ruijie Certified Presales (RCPS) and Network Ruijie Certified Network Associate (RCNA).



Technical Services and Warranty Management

Support Level
<b>Level 1: 24 * 7 online support</b> Live Chat : <a href="mailto:service_rj@ruijienetworks.com">service_rj@ruijienetworks.com</a> (English speaking) - Call reception, service entitlement check and request acknowledgement.
<b>Level 2: Ruijie TAC Case Portal</b> - Standard product feature support including configuration. - Return Material Authorization (RMA) processing. - Hardware and/or software solution problem resolution or workaround.
<b>Level 3: Remote Support</b> - Advanced support of product features, diagnosis problems remotely
<b>Level 4: Onsite Support</b> - Priority technical assistant and support at Level 3 (remote support) Field Technical Assistant and Support. - Level 4 support task including : Ruijie certified service representative * onsite presence to diagnose and troubleshoot Ruijie Networks' product and software solution.







**Ruijie**

**INNOVATION**

Beyond Networks



For further information, please visit our website <http://www.ruijienetworks.com>

Copyright © 2018 Ruijie Networks Co., Ltd. All rights reserved. Ruijie reserves the right to change, modify, transfer, or otherwise revise this publication without notice, and the most current version of the publication shall be applicable.